

Volume 36, Number 1

January 2012

WHAT'S INSIDE

President's Perspective..... 2
 Delegate Details..... 3
 Techno Minute3
 What's New Review 5
 Recent Events..... 7
 Upcoming Events 14
 Committee Announcements...16
 Other Announcements21
 New Members25
 Chapter Leadership..... 26

UPCOMING EVENTS



“National Incident Management System (NIMS) – Introduction to Incident Command System (ICS 100) for Public Works”
Not Just a Requirement, Our Friend, Our Future, Our Success!

Speaker: Battalion Chief Ken Plante

January 18th, 2012 @ Garozzo’s Ristorante

See page 14 for details.

PACE AWARD RECIPIENT

- 1997
-
- 1998
-
- 1999
-
- 2000
-
- 2001
-
- 2002
-
- 2003
-
- 2004
-
- 2005
-
- 2006
-
- 2007
-
- 2008
-
- 2009
-
- 2010
-
- 2011!**



“Sustainability: A New Vision for Public Works”

Speaker: Julia Anastasio, APWA Director of Sustainability

January 25th, 2012 @ Anita B Gorman Conservation Discovery Center

See page 15 for details.



2012 APWA Awards

It's awards time...get your submissions ready!

See page 16 for details.

2012 Board of Directors

List of board members and introduction to the two new members to the board - Jerry Johnson and Heidi Thummel!

See page 21 for details.

Please note new contact information for Pub News articles, ideas, or comments:

Shannon Jeffries - shannon.jeffries@cityofks.net

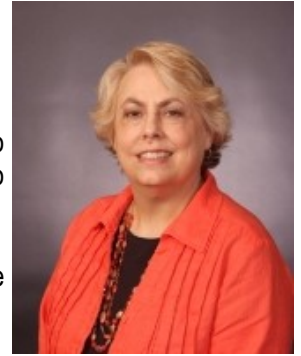
PRESIDENT'S PERSPECTIVE

FROM DENA MEZGER

Happy New Year to All!

It is hard to believe it is already 2012 and the start of my year to write this column for Pub News. I want to start out by thanking everyone who made 2011 a great success for our chapter as well as all those who have volunteered to continue these efforts throughout the coming year.

This past year was a very productive year. In 2011 we completed or implemented a number of the objectives identified in the chapter's strategic plan including:



- Combining a number of committee functions to streamline the coordination of committee activities
- Updating the Chapter Leadership Manual (available on the chapter website)
- Developing a plan for promoting public works careers to students and forming a permanent K-12 Student Outreach Committee to carry on these activities
- Working on a plan to increase participation of members in the operations sector
- Adding a new Pub News feature, the "What's New Review," highlighting information on products, projects or initiatives that could be of value to other chapter members

In addition to work on the strategic plan, the chapter's first Public Works Institute class on supervision basics was held October 31st through November 2nd in Olathe, Kansas. The session was attended by 16 operations staff members from around the metro. The second class is planned for the coming year. A special thank you goes to Joel Riggs who brought this initiative to fruition. (See page 7 for an article regarding PWI.)

In 2012 we will continue efforts toward implementation of the strategic plan. Toward that end we will:

- Need lots of help from our members for the K-12 Student Outreach Committee activities.
- Develop an advocacy action plan to educate the public, including elected officials, in terms of what Public Works is and does, the issues facing the PW sector, and how that affects them.
- Work with national APWA to coordinate mentoring efforts. The implementation of the Donald C. Stone Center on a national level appears to dovetail into our mentoring objective.
- Continue to identify new ways for operations, fleet, traffic, vendors, contractors, and watershed staff to get more involved in chapter activities.
- Continue to increase avenues of communication such as social media.
- Contact agencies that have reduced membership in recent years to identify issues, concerns, and ways to make APWA membership valuable to that agency .

One of the major ways the chapter has been of value to members in the past has been the development and maintenance of standards and specifications. In recent years we have not put much effort into keeping these documents updated and responsive to the needs of our agencies. Therefore, the major new initiative that we will begin this coming year is determining the future of standard documents. The Standards & Specifications Committee, chaired by Leon Staab, will be tasked with:

- Obtaining feedback from metro agencies of all sizes regarding current use of the APWA design criteria and construction specifications
- Identifying issues, problems, and concerns about the documents, and
- Developing an action plan and making recommendations to the Executive Committee regarding the future of the chapter standards

Anyone who would like to participate in this effort, please contact Leon Staab or me.

In closing, I want to say thank you for the opportunity to serve as chapter president. I also want to say thanks again to everyone who makes this chapter work, especially Tom Rottinghaus for his leadership this past year as president; Jerry Johnson, outgoing past-president; and Steve Hansen, outgoing Executive Committee member/treasurer. I look forward to working with everyone in 2012 and hope to see you at upcoming events!

DELEGATE DETAILS

FROM JOE JOHNSON

I am writing this as we bring 2011 to a close and begin another year.

As we start 2012, APWA National will be posting Committee positions for the upcoming year. All available committees, councils and task force positions that will be appointed in 2012-2013 will be posted on January 3rd, 2012. If you have any questions you can contact Cindy Long at clong@apwa.net or (816) 595-5220. You can also log on to National's web site at www.apwa.net and click on the link "Be Involved" at the top of the page. National is also looking for volunteers to serve on one of its many committees being formed under the Institute for Sustainable Infrastructure. If you are interested in volunteering at the National Level, I encourage you to check this out.



National is also finalizing plans for several of its conferences this year.

- 2012 Snow Conference in Milwaukee, Wisconsin April 29th – May 2nd.
- 2012 Sustainability Conference in Pittsburg, Pennsylvania June 25th – 27th.
- APWA National Congress in Anaheim, California August 26th -29th.

If interested in any of these you can go online at www.apwa.net to check out the conference and register.

Here at home, the Chapter's many committees continue working on bringing informational topics for the monthly chapter lunches, developing educational venues for all areas of public works, and hosting events throughout the year.

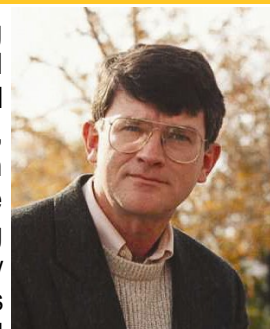
On a regional level, Chuck Williams and I will work to attend many of our neighboring Chapter's spring and fall conferences giving us the opportunity to see what other Chapters are doing. Chuck and I will also attend the two delegate meetings, the Regional meeting held this year in Canada and the House of Delegate during Congress.

Finally, I encourage all members to volunteer their time with the Chapter; we have many committees that touch on every aspect of Public Works. It is a great way to get involved with the Chapter and work with your peers. Check out the list of committees included in the Pub News.

TECHNO MINUTE

FROM MIKE ROSS

If you can still remember the emotions surrounding being eight years old on Christmas Eve and waiting anxiously for Christmas Day to arrive, you will appreciate the timeline for the adoption of the federal Accessibility Guidelines for Pedestrian Facilities in the Public Right-of-Way, or PROWAG. You may be old enough to remember the passage of the Americans with Disability Act in 1990 that, among other things, required public works agencies to build sidewalk ramps and accessible sidewalks in public rights of way. In 1990 we were told to make the building accessibility guidelines (ADAAG) work as best we could within the public right of way, recognizing that street grades could not be controlled as well as those within building sites. We were also told that a set of guidelines tailored for pedestrian facilities within public rights-of-way would be forthcoming. In October of 1999 the Access Board formed the Public Rights-of-Way Access Advisory Committee to help develop guidelines for public rights-of-way. Our very own Michele Ohmes served as one of the committee members. Their report, "[Building a True Community](#)", was published in January of 2001. In 2004, a set of draft guidelines based on the work of the committee was published, comments were requested from the public, and the Office of Management and Budget was tasked with determining the cost of implementing the law. Thousands of comments were received for consideration and incorporation into the final guidelines. The KC Metro Chapter provided comments prepared by the committee formed to update Section 2300 of our specifications which, among other things, includes specifications for sidewalks and ramps.



On July 26th, 2011 the Access Board released another set of [draft guidelines](#) and again asked for public comment. The December 5th, 2011 deadline for those comments has now been extended to February 2nd, 2012. Our Chapter President Dena Mezger is working to convene a committee to write a comment letter representing the KC Metro Chapter before this new deadline. Peter King has already [commented](#) on behalf of APWA National, the Transportation Technical Committee and other members. I would encourage all of you to comment, or at least send your concerns to [Dena](#) or [me](#) for inclusion in the committee comments.

I have read dozens of the comments already submitted, and nearly all are opposed to the requirement requiring pedestrian signals at all legs on multi-lane roundabouts. An advocate from the disabled community asks that the board "be strong" in resisting this

Continued on Page 4

Techno Minute, Continued from Page 3

opposition. Traffic engineers seem to be universally and vehemently opposed to a requirement that will eliminate new multi-lane roundabouts and remove our ability to overlay existing ones.



I recently encountered a construction crew installing new sidewalks around a facility owned by one of our area cities. The walk abutted a retaining wall and by a considerable margin exceeded the allowable 2 percent cross slope. I come across violations of ADA requirements in new construction in many areas. Sadly, my daughter Molly, who was 8 years old when I enlisted her help in photographing issues that the Section 2300 committee was working on, can still look at sidewalks and curb ramps and tell me how they SHOULD have been constructed to be ADA compliant. I would trust her (now 15) to be able to lay out more compliant sidewalks and ramps than many of the construction crews that continue to build them. The maximum allowable cross-slope along a pedestrian access route was 2% in 1990, is 2% in the 2011 draft guidelines and has been 2% in every version between. Why we can not build these correctly remains a mystery to me.

The late Michael A. Whipple, who was the access coordinator for Sacramento, California, developed the concept of designing by “elements.” He suggested that each element of the pedestrian access route should be individually defined and specified. These elements can be combined in any order to provide a pedestrian access system. Fundamental elements include ramps, landings, detectable warning panels and sidewalks. Landings are places where you turn a wheelchair and must be flat in both directions. Ramps are used to change elevation, can have a longitudinal slope of between 5 and 8.33% and a transverse slope no more than 2%. You get the idea. Rather than trying to fit a predefined system into every situation, designing by elements allows the appropriate elements to be arranged in whatever combination best fits a given situation. His concept was brilliant in its simplicity. Our 2300 Committee incorporated this concept in our drawings and recommended that each element be dimensioned including spot elevations at corners to show slopes. All too often, we try to use a generalized standard detail and expect the contractor and inspector to design the ramp while the concrete is in route.

At some point during 2011, a workshop discussed the 2010 ADA Standards for Accessible Design and left many in the audience with the impression that detectable warnings (truncated domes) had been eliminated. **THIS IS NOT TRUE** in the public right of way. While the standard is still in draft form, public rights-of-way will be governed by the Accessibility Guidelines for Pedestrian Facilities in the Public Right-of-Way. Detectable warnings have been largely eliminated on private development sites and at the intersections of sidewalks and private driveways within the public right-of-way. I asked the Access Board to clarify whether detectable warnings would be required for the intersections of private streets. Melissa Anderson, an engineer and staff member of the US Access board, responded:

“While streets in private developments are not covered directly by the guidelines, several things should be considered in providing accessibility. Many times these streets are eventually given over to a government agency that must meet the requirements and the detectable warnings and other accessibility requirements would likely have to be met at that time. Also, the intent of the guidelines is to provide safe and accessible pedestrian facilities, which should be a goal of private developments as well.”

Incidentally, the US Access-Board (<http://access-board.gov>) is a great resource that too few of us utilize. Their role includes providing technical assistance and training to agencies sorting through the many accessibility issues. I have found them to be helpful and very responsive to questions regarding accessibility issues.

Now that we are on the brink of having guidelines tailored for rights-of-way, this might be a good time to dust off the transition plan that you prepared back in 1993 (and which is a requirement of the law), review how the changes in the law have impacted it and then perform an update. Several years ago, Overland Park hired Michele Ohmes to help us in developing a supplement to our transition plan that looked at accessibility in our downtown area. That study provided us with a complete inventory of access issues, helped us resolve several parking issues, and identified a number of problems that we have or will fix with major maintenance or redevelopment projects.

If you were an eight year-old wheelchair user when your congressman first promised you access along public streets, you would now be 32 and you would have an opportunity to comment on what may become law later this year or next. Your access would have improved significantly, but there are many areas that you will not be able to access. By the time that this new law is accepted by all of us, and we rebuild all of our intersections to provide the accessibility that the law envisioned, you or your children may be drawing Social Security (if Social Security survives well into the 21st Century).

WHAT'S NEW REVIEW

The City of Kansas City, Missouri Public Works AVL-GPS Fleet Monitor

Submitted by: Tom Degenhardt, P.E., R.L.S. - Assistant City Engineer - Kansas City, Missouri Public Works

The City of Kansas City, Missouri encompasses 318 square miles in parts of Cass, Clay, Jackson, and Platte Counties. The City has approximately 6,400 lane miles of pavement surface. 2,400 lane miles are on the primary and arterial streets that connect neighborhoods and accommodate cross-town traffic. Primary and arterial streets are plowed from curb-to-curb and receive heavier salting than residential streets. In residential areas, there are approximately 4,000 lane miles of streets. The crews assigned to residential snow plows strive to provide a passable lane in residential areas. A passable lane may have snow-pack, but is still considered passable. When conditions allow, the passable lane is widened. At the start of a winter weather event, a single 2,000 mile centerline is plowed on residential streets. As widening is possible, crews strive to clear as much of the 4,000 lane miles as is reasonably possible. In residential areas, plows apply salt and sand to hills, curves, intersections and known slick spots. When fully staffed, the Public Works, Parks and Recreation and Water Services Department's have approximately 250 vehicles on City Streets. Of these, about 67 are pick-up trucks assigned to residential routes.

The Public Works Department needed a way to track the progress of snow plowing operations. In the spring of 2010, we began the process of deploying an AVL (Automatic Vehicle Location) and GPS (Global Positioning System) on the fleet of snow vehicles. The City's Information Technology Department (ITD) requested this new system be generic enough to be used by other city department's vehicles as well but also flexible to adapt to specific needs of each department. The City's General Services Department advertised the Request for Proposals for this system and six vendors responded. Three of these vendors were interviewed. Location Technologies Inc., a local vendor from Parkville, Missouri was selected. The system for the Public Works snow fleet includes an AVL modem in all vehicles, plow up/down sensor in all vehicles, and an on-board personal computer (behind the seat) with a nine inch monitor for the residential pickup trucks. The vehicles with the on-board computer and monitor have the ability to display maps and vehicle location typical to a Garmin GPS unit.

Phase one of the implementation was for the 67 pick-up trucks assigned to the residential routes. The goal was to have the system installed in all vehicles by December 31st, 2010. This goal was achieved. Phase two of the implementation was for the remaining large CDL (Commercial Driver's License) vehicles which plow the primary and arterial streets. These included 250 plus vehicles from the Public Works, Water Services, and Parks and Recreation Departments. Installation on these vehicles began in spring of 2011 and was completed in October of 2011.

The application for monitoring the fleet is a web-based secured system which is accessed through Microsoft Internet Explorer. The city is currently contracting with the vendor for web-hosting. In the future, the city will host the application internally. There are two software applications for the system. The first is called NavigoExplorer (**Figure 1**). NavigoExplorer is a real-time application to show the current location of trucks. Any truck can be queried as to their current location and the map will zoom to that location. Current speed and direction is also given. Users also have the option of showing the previous 24 hours of activity by vehicle location in the NavigoExplorer application.

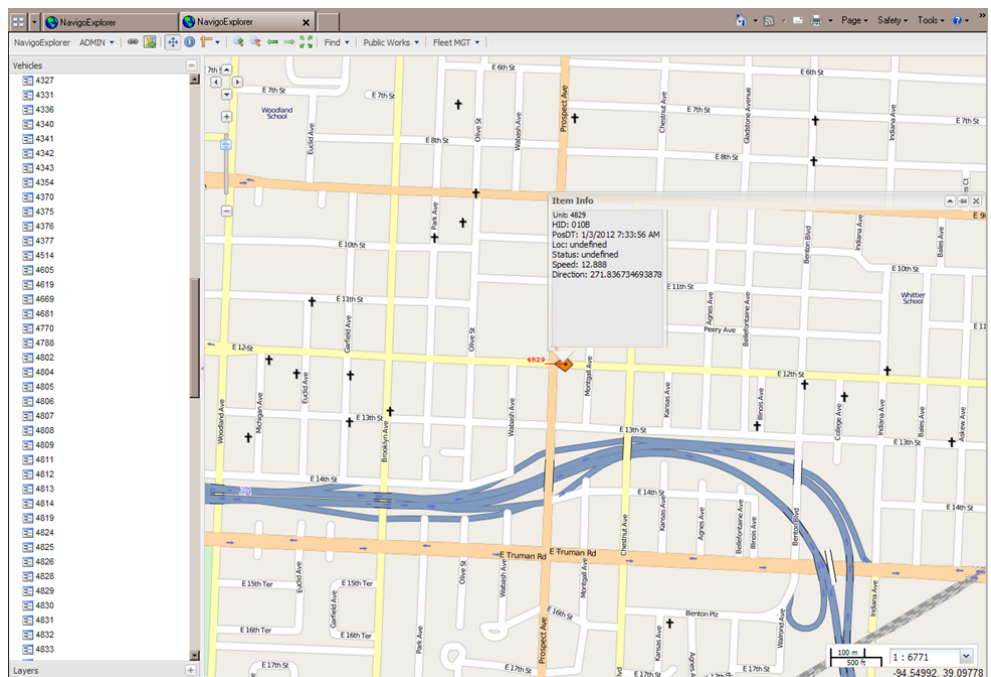


Figure 1 - Screenshot of NavigoExplorer

Continued on Page 6

What's New Review, Continued from Page 5

During snow operations, NavigoExplorer will show whether or not an AVL equipped city snow vehicle has been down a particular street with the plow in the down position. The street centerline segment will change from white for no plow activity, to orange for snow plow activity within the last 8 hours, to blue for snow plow activity between 8 and 16 hours, and red for snow plow activity for longer than 16 hours. NavigoExplorer is used by internal city staff only. However, ITD has developed a citizen portal to the map which includes the ability to query for an address and show the centerline colors described above (**Figure 2**). The citizen portal will not show the live locations of the vehicles.

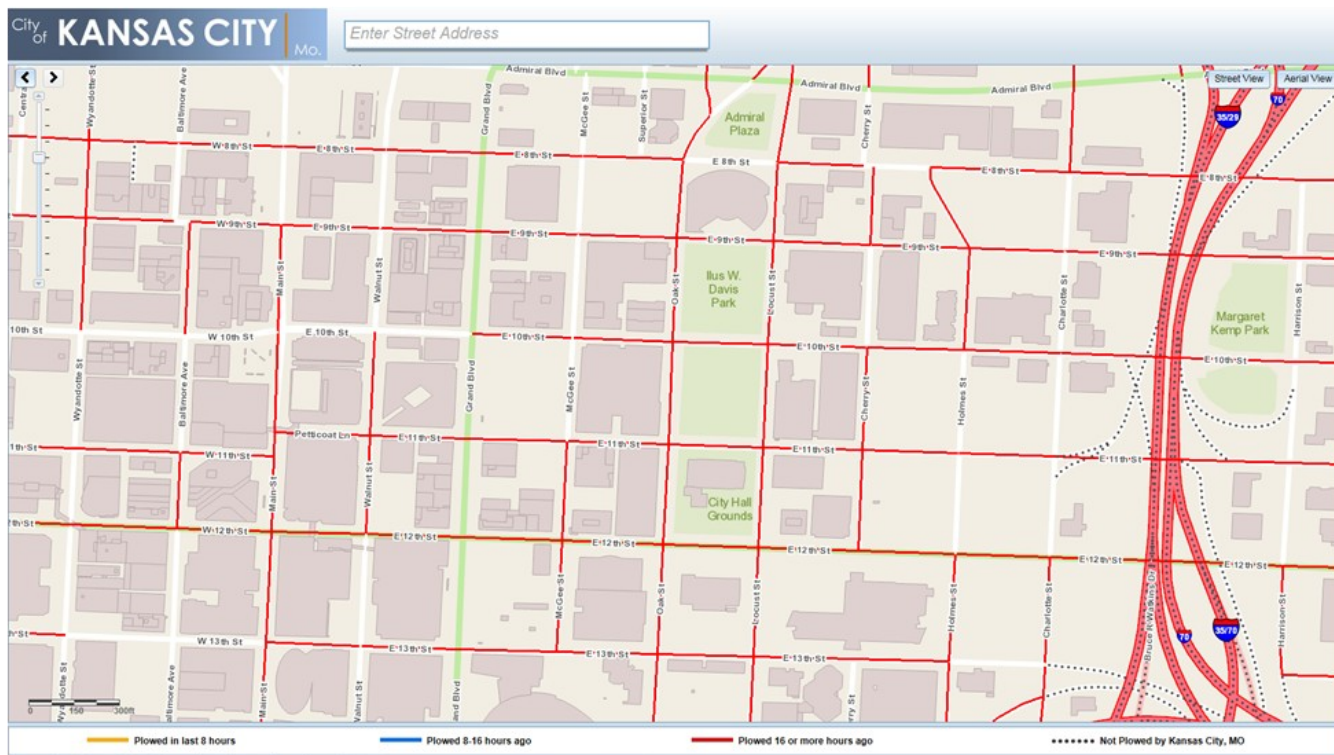


Figure 2 - Screenshot of Citizen Portal Map

The second software for the system is called NavigoReports. NavigoReports is a web based application for querying historic data. Every AVL vehicle transmits its location every twenty seconds via modem back to the servers. This data is archived and can be retrieved through NavigoReports. Any vehicle or groups of vehicles history can be retrieved for up to one year. Once retrieved, the data can be exported to an ESRI ArcGIS shapefile or Google Earth.

The AVL system proved to be very useful for the snow events of 2011. Daily activity maps were exported from NavigoReports and made available to the residential drivers to check their coverage and to look for missed streets. Public Works management staff used these reports to answer 3-1-1 inquiries about missed streets and with the legal department for damage claims from snow plows.

Future enhancements will include the ability to place "fences" around areas such as the city limits and have email notifications if a vehicle crosses the fence. Another enhancement includes the ability for a driver to simply push a button in their truck to identify and map the location of a street plate, pot hole, water line break, illegal dump site, or anything else which requires action by the city.

WHO'S NEXT!?

Have an idea for an article for the 'What's New Review'? Want to feature your project, new process, or product? Contact Shannon Jeffries at shannon.jeffries@cityofks.net or 816.969.1821 for submittal information.

RECENT EVENTS

KC Metro Public Works Institute



On October 30th, 2011 the KC Metro Chapter initiated our own Public Works Institute (PWI) aimed at improving the managerial and supervisory skills of our members. An institute is an educational/training program offered by APWA through individual chapters concentrating on management and leadership professional development. The Public Works Supervision Essentials, module one of four, was attended by 16 individuals from the metro area. This marks the first of four, three-day training classes focused on the education and training of our field and maintenance personnel to improve their skills as a manager. The KC Metro PWI was developed in conjunction with the goals and objectives of APWA national requirements and thus the PWI curriculum was submitted to National for approval and recognition as an approved institute. Once complete, the KC Metro Chapter will have one of thirteen nationally approved institutes in the country.

For our initial institute class the KC Metro Chapter utilized the services of Mr. John Ostrowski as the lead facilitator. John has been involved in the development of several PWI's across the country and has published the only book available on how to establish an institute. In August 2011, John held an instructor training class for individuals interested in volunteering to teach one of ninety classes offered as part of the institute's diverse class list. For the initial classes the Chapter had seven instructors volunteer to teach. I would like to thank Larry Frevert, Dena Mezger, Bill Ramsey, Chuck Williams, Patty Gentrup, and Monty Zimmerman for volunteering to teach, and Dennis Randolph for his assistance with the national approval process. I would also like to give special thanks to the City of Olathe, Ron Norris, and Rebecca Bilderback for allowing the PWI classes to be held at the City's training facility.



As we look to the 2012 calendar, we are working to develop at least one and possibly two classes in the coming year. If you are interested in attending the second class in the series or thinking about enrolling in the initial class please contact Joel Riggs at jriggs@skw-inc.com or 913-888-7800.



2011 APWA KC Metro Chapter Holiday Party - Wednesday, December 14th

The 2011 APWA Holiday Party was a big success! With over 100 people in attendance at the Downtown Muehlebach, the event was highlighted with several great moments. Our honored Keynote Speaker was Elizabeth Treadway, President-Elect of the National APWA Board of Directors. She provided us with a review of the progress APWA has made in the last year which has included fine tuning an aggressive Strategic Plan and turning the tide of our membership after a couple of years of decline. Special thanks to our event sponsors and Santa Helpers. This years Santa Helpers donated over \$800 in gift cards!



Santa Helpers

Burns & McDonnell	SAK Construction
GBA	Shafer Kline & Warren
HDR	TranSystems
HNTB	TREKK Design
J.M. Fahey	UHL Engineering
Olsson Associates	Wiedemann & Godfrey

A very special thank you to the following sponsors!

Audio/Visual: TSi Engineering
 Decorations: Shafer, Kline & Warren
 Entertainment: Burns & McDonnell

2011 APWA KC Metro Chapter Holiday Party, Continued from Page 8



Pre-dinner entertainment was provided by members of the local musical group Kansas City Chorus of Sweet Adelines.



Elizabeth Treadway, President-Elect of the National APWA Board of Directors, addresses attendees.



2011 KC Metro Chapter President Tom Rottinghaus welcomes 2012 KC Metro Chapter President Dena Mezger.



Mark Hartegan presents 2011 award winners.



Elizabeth Treadway installs the 2012 KC Metro Chapter Board of Directors.

2011 APWA KC Metro Chapter Holiday Party - Awards Presentation

The following awards were presented at the Holiday Party on Wednesday, December 14th, 2011. Thank you to all who submitted award applications.

- **Field Supervisor Excellence Award**

This award recognizes outstanding field supervisors whose service, achievement, leadership and dedication in Public Works related field activities have had a positive impact on the efficiency and effectiveness of governmental operations thereby improving the quality of life for those who live and work within that community.

- **David Frazier, City of Belton.**

David Frazier has been with Belton for 3 ½ years. David displays time and time again his willingness to go the extra mile, to be a team player, and make difficult decisions to improve the working environment and efficiency of his operations. David was part of the small, interagency team led by Belton that developed a unit rate price street maintenance contract that was available to other Cass County cities. The snow removal operations David is responsible for have received many favorable comments from the community. For Christmas last year, David jump started the first public works charity event that raised several hundred dollars for a local organization to help the needy. The Assistant City Manager of Belton, who has been with the City for 26 years, was quoted as saying this about David, "he is the most capable and competent division head we have ever had."



- **Public Works Excellence Award**

This award recognizes an individual Public Works employee whose excellence, dedication, and outstanding achievements in overall public service have improved the quality of life for those who live and work within that community.

- **Ron Hooper, City of Shawnee.**

Ron began working at the City of Shawnee in 1992 as an engineering technician. His duties at the time were primarily the review of private development plans. Ron quickly became knowledgeable in the City's Design Criteria and Technical Specifications, and the APWA KC Metro Chapter Technical Specifications. Later, Ron was promoted to Development Review Manager. His additional duties include street light petitions, right of way dedications and vacations, and flood plain administration. Ron's dedication to his work is evident by the many hours he works, well after everyone else has left City Hall. His positive attitude welcomes prospective developers along with their engineers and architects, as they go through the development review process. Outside of the workplace, Ron has been very active in the Boy Scouts and at his church.



Continued on Page 11

2011 APWA KC Chapter Holiday Party Awards Presentation, Continued from Page 10

• **Operations Program Excellence Award**

This award recognizes outstanding Public Works Agency operation programs which have improved the efficiency and effectiveness of governmental business thereby improving the quality of life for those who live and work within that community.

○ **City of Olathe Recycling Program.**

The City of Olathe continually looks for ways to improve their recycling program. From 1997 to 2008 the City offered recycling bins to residents for curbside recycling with limited services. Beginning in 2009 and fully implemented in 2010, the City switched to its new recycling program. Features of the new Olathe recycling program include:

- Option of a 35-gallon, 65-gallon or 95-gallon recycling cart on wheels.
- All households are provided a recycling cart on wheels.
- Recycling carts on wheels are blue to make them easily identifiable for recycled materials and to make sure they are distinguishable from the gray trash “smart carts”.
- Recycling cost is included in the solid waste bill.
- Residents easily push their wheeled cart to their curb every other week.
- Residents can recycle plastics #1 through #7, paper, newspaper, chipboard, cardboard, magazines, aluminum, paper egg cartons, tin, telephone books and more.
- Residents can drop off glass at multiple locations in Olathe as part of the city’s cooperative agreement with Ripple Glass.



Under the old “bin” recycling program, only about 30% of Olathe residential households participated in the curbside pickup recycling program. With the new recycling program participation has more than doubled with more than 65% of Olathe households using the service on any given collection day.

○ **City of Overland Park Snow and Ice Control Program.**

Each year, the City of Overland Park implements its snow and ice control program which goes from November 1 to April 1. The program starts with the City’s cultural mission to make quality snow and ice control, one of, if not the highest winter mission. In all, there are roughly 170 employees involved in the program, representing just about every department in the City. One of the more unique aspects of the snow program in recent years has been its customer service and communications component. During each snow event the City activates a public snow map and staffs a customer service rep. The public snow map uses these resources together with the City’s GIS mapping system to create an easy to use application for locating snow trucks and assessing their progress. Residents can access the snow map from the City’s website and can either view snow plowing progress on an overall city-wide basis, or by inputting an address where they can see more detailed progress in their immediate neighborhood.



Continued on Page 12

2011 APWA KC Chapter Holiday Party Awards Presentation, Continued from Page 11

Samuel A. Greeley Service Award

This award gives formal recognition to persons who have continuously served one local agency for 30 or more years and who have been a member of APWA for 15 or more years.

Randy Carroll, City of Merriam, KS

Randy is a graduate of Emporia State University. Randy joined the City of Merriam in 1981, and his current position is Director of Public Works. Randy joined APWA in 1982.

Kevin Eisenbeis, Harrington & Cortelyou, Inc

Kevin joined Harrington and Cortelyou in 1980 as an Engineer in Training. He worked his way up through design, project engineer, and project management. He became a principal in 1993, with leadership roles in the firm's major bridge, railroad bridge and moveable bridge practices. Kevin has worked on 12 Missouri River bridge projects in his career. Most recently, Kevin led the H&C effort in the strategic acquisition of the firm by Burns & McDonnell in July 2010. Kevin joined APWA in 1986.



Larry Finley, City of Grandview, MO

Larry began his public works career as a construction inspector with MoDOT in 1975. Larry joined the City of Grandview in the position of Civil Engineer in 1981. Larry's current position is City Engineer of Grandview. Larry joined APWA in 1982.

Jim Foil, Burns & McDonnell

Jim began his public works career in 1975 with the US Environmental Protection Agency, Region VII, and worked in the Water Division and Waste Management Division. In 1981 Jim joined Burns & McDonnell. He has worked his way up from project development manager in infrastructure practice to senior vice president and general manager of the infrastructure practice area. Jim joined APWA in 1989, and served as the KC Metro Chapter president in 2009.



Tony O'Malley, Larkin Group

Tony joined Larkin Associates in 1981 as an Engineer in Training, and worked on projects for municipalities, utility districts and private companies on drinking water projects. Tony became a PE in 1986 and an Associate at Larkin in 1988. He was promoted to his current position as Principal/Vice President of Larkin Group in 1993. Many of Tony's projects have brought safe affordable drinking water to homes that did not have an approved supply. Tony joined APWA in 1988.



John Sullivan, City of Westwood, KS

John began his career as a part-time laborer with Westwood in 1979, going full time in 1981. John worked as a Maintenance Man, and was promoted to Assistant Superintendent of Public Works. He was promoted to his current position of Director of Public Works in 1991. John also serves as the Director of Public Works in various capacities for the City of Westwood Hills and the City of Mission Woods, Kansas. John joined APWA in 1988.

Continued on Page 13

2011 APWA KC Chapter Holiday Party Awards Presentation, Continued from Page 12

APWA Lifetime Membership

Larry Finley, City of Grandview, Missouri, earned APWA Lifetime Membership in 2011.

Ken Cardwell Heart of America Award

This award is to recognize individuals who have served the Kansas City Metropolitan Chapter of APWA in an exemplary manner and through their efforts have bettered the public works community. It is the most prestigious award given by the KC Metro Chapter. Keeping with chapter tradition, the winner of the award was kept secret beforehand and announced during the Holiday Party.

Chuck Owsley, the 2010 Heart of America Award Winner, presented the 2011 Ken Cardwell Heart of America Award to **Mike Ross, City of Overland Park, KS.**



Past President Award

Incoming 2012 Chapter President **Dena Mezger** awarded the 2011 Chapter President **Tom Rottinghaus** with a plaque and the travelling past-president plaque as a token of appreciation for his service to the chapter in 2011.



UPCOMING EVENTS



“National Incident Management System (NIMS) – Introduction to Incident Command System (ICS 100) for Public Works” *Not Just a Requirement, Our Friend, Our Future, Our Success!*

Speaker: Battalion Chief Ken Plante, City of Lee’s Summit Fire Department

Date: Wednesday, January 18th, 2012

Time: 11:30 AM – Check-in
12:00 PM – Lunch
12:30 PM – Presentation

Location: Garozzo’s Ristorante, 1547 NE Rice Road, Lee’s Summit, Missouri 64086

Cost: \$25.00, includes - Chicken Spiedini Garozzo, baked lasagna, sugo, mixed steamed vegetables, Garozzo’s house salad, sliced bread and butter, white cake with a lemon filling, coffee and iced tea station

Registration: [Register Here!](#)

Speaker Bio: Ken Plante is the Battalion Chief of Training for the City of Lee’s Summit, Missouri. Mr. Plante has been with the City for 32 years. He is a Missouri licensed/nationally registered paramedic, a hazardous materials specialist, a Missouri State Fire Instructor II, and has been the lead planner for four regional full scale exercises. Mr. Plante also serves as an adjunct field instructor for the following agencies: Missouri Bureau of EMS, American Heart Association, International Association of Firefighters, New Mexico Tech, Federal Emergency Management Agency, University of Missouri Fire Rescue Training, Bechtel Nevada Counter Terrorism Operations Support / UNLV, Homeland Security Office of State & Local Government Coordination & Preparedness, and the Department of Energy - Transportation Emergency Preparedness Program.

APWA CENTER FOR SUSTAINABILITY

Topic: "Sustainability: A New Vision for Public Works"

Speaker: Julia Anastasio, APWA Director of Sustainability

The KC Metro Chapter *Leadership & Management* and *Sustainable Infrastructure* committees are hosting a breakfast followed by a presentation by Julia Anastasio, Director of Sustainability, APWA Center for Sustainability. Julia will discuss the efforts of the Center as well as share the partnership of APWA, ASCE and ACEC in the *Institute for Sustainable Infrastructure* and its recent development of a sustainability rating system.

Location: Anita B Gorman, Conservation Discovery Center
4750 Troost Ave.
Kansas City, Mo 64110

Date: January 25th, 2012

Time: 8:00 a.m. Check in, breakfast buffet
8:30 a.m. Presentation

Cost: \$10 (Breakfast - scrambled eggs, bacon, hash browns, bagels, juice and coffee)

Registration: Please RSVP by January 20th, 2012 - [Register Here](#)

Speaker Bio:

As Director of Sustainability for the APWA, Julia is responsible for managing and directing the APWA Center for Sustainability. In this role she is responsible for Center governance, policy and program development, advocacy and partnership development, educational program development, and outreach to members, other professional organizations and with Federal partners. Prior to becoming Director of Sustainability, Julia was APWA's Senior Manager of Government Affairs where she advocated on the legislative and regulatory affairs affecting public works agencies and public infrastructure, with a focus on environmental issues.

Prior to joining APWA, Julia worked as an Executive Policy Specialist at the PA Department of Environmental Protection where her primary responsibility was to ensure implementation of the administration's priorities as they related to water and land use. Julia began her career as an Attorney Advisor in the US Department of Commerce Office of General Counsel, Associate General Counsel for Legislation and Regulation, where she was awarded the Secretarial Gold Medal Award for Leadership. Julia earned her JD from the Washington College of Law, American University in 1999; her Masters in Environmental Law & Policy from Vermont Law School in 1996, and a B.A. in Government from Franklin & Marshall College in Pennsylvania in 1995.

COMMITTEE ANNOUNCEMENTS

APWA Awards Committee - from Mark Hartegan, Committee Chair



APWA 2012 Awards

Does your city or company have a project, employee or program that might be deserving of some special recognition? Please consider nominating outstanding individuals, programs and projects for an APWA award as described below. Award winners will be recognized at the KC Metro Chapter APWA National Public Works Week luncheon in May 2012. Award guidelines and award nomination forms are available at:

<http://www.apwa.net/About/awards.asp>.

Please note the 2012 Awards process has changed. Award application packages shall be submitted in .pdf format only (hard copies no longer required). Please read the awards announcement below for details, and contact Mark Hartegan, KC Metro Chapter Awards Committee Chair, at 816-363-2696 with any questions.

Public Works Project of the Year Award

Guidelines and nomination forms are available at <http://www.apwa.net/About/awards.asp>. Completed **nomination forms** are due to the KC Metro Chapter Awards Committee Chair Mark Hartegan by **January 23rd, 2012**. **One .pdf copy** of completed **application packages** are due to Mark Hartegan by **February 6th, 2012**. Each application package shall be one .pdf file. Please email nomination forms and application packages to Mark Hartegan at mhartegan@hwlochner.com. Files too large to email may be sent on CD to Mark Hartegan at: H.W.Lochner, 903 E. 104th St., Suite 800, Kansas City, MO 64131.

A managing agency may submit no more than 1 project per category and division. The KC Metro Chapter Awards Committee shall evaluate the applications in February and shall **select one project per category and division to win a chapter level award**. Prior to the March 1st, 2012 deadline, the Awards Committee shall submit 1 .pdf copy of the application packages of the chapter level award winners to APWA National for consideration of a national level award. These projects will be the official projects sponsored by the KC Metro Chapter.

Chapter level non-winners may still submit their project to APWA National prior to the March 1st, 2012 deadline for consideration of a national level award, but the project will not be sponsored by the KC Metro Chapter.

<p>Public Works Project of the Year</p>	<p>Purpose: The APWA Public Works Project of the Year Award was established to promote excellence in the management and administration of public works projects by recognizing the alliance between the managing agency, the consultant/architect/engineer, and the contractor who, working together, complete public works projects. Awards are given in four divisions:</p> <ul style="list-style-type: none">• <i>Projects less than \$5 million</i>• <i>Projects of \$5 million, but less than \$25 million</i>• <i>Projects of \$25 million to \$75 million</i>• <i>Projects more than \$75 million</i> <p>and five categories:</p> <ul style="list-style-type: none">• <i>Structures</i>--to include public structure preservation/rehabilitation, municipal buildings, parks, etc.• <i>Transportation</i>--to include roads, bridges, mass transit, etc.• <i>Environment</i>--to include treatment and recycling facilities, landfill reclamation projects, sewer projects, etc.• <i>Historical Restoration/Preservation</i>--to include historical restoration, preservation and adaptive reuse of existing buildings, structures, and facilities, etc.• <i>Disaster or Emergency Construction/Repair</i>--to include the techniques and timing for safety, community relations, environmental protection, adverse conditions and additional considerations <p>Eligibility: Public Works is defined as the physical structures and facilities that are developed, owned, and maintained by public agencies to house governmental functions and provide water, power, waste disposal, transportation, and similar public services in accordance with established public policy. To be eligible for nomination, a project must have been "substantially completed" and available for public and/or agency use within two calendar years prior to the nomination. If a project has multiple phases or segments, then "substantially completed" will be construed as that point when the final phase or segment is 90% completed and available for public and/or agency use. A project may be nominated only once for recognition as "Project of the Year" under any category.</p>
--	---

Continued on Page 17

APWA Awards Committee, Continued from Page 16

Other Award Categories

The award categories are listed below. Guidelines and nomination forms are available at <http://www.apwa.net/About/awards.asp>. Completed **nomination forms** are due to the KC Metro Chapter Awards Committee Chair Mark Hartegan by **January 23rd, 2012**. **One .pdf copy** of completed **application packages** are due to Mark Hartegan by **February 6th, 2012**. Each application package shall be one .pdf file. Please email nomination forms and application packages to Mark Hartegan at mhartegan@hwlochner.com. Files too large to email may be sent on CD to Mark Hartegan at: H.W.Lochner, 903 E. 104th St., Suite 800, Kansas City, MO 64131.

A managing agency may submit no more than 1 candidate/program per category and division. The KC Metro Chapter Awards Committee shall evaluate the applications in February and shall **select one candidate/program per category and division to win a chapter level award**. Prior to the March 1st, 2012 deadline, the Awards Committee shall submit one .pdf copy of the application packages of the chapter level award winners to APWA National for consideration of a national level award. These candidates/programs will be the official candidates/programs sponsored by the KC Metro Chapter.

Chapter level non-winners may still submit their candidate/program to APWA National prior to the March 1st, 2012 deadline for consideration of a national level award, but the candidate/program will not be sponsored by the KC Metro Chapter.

The following awards require nominees be APWA members in good standing:

Community Involvement Award	To recognize public works leaders who are also leaders in their community. To encourage public works professionals to become active leaders in their community. To ensure public trust in public works professionals through recognition of outstanding community leadership.
Charles Walter Nichols Award for Environmental Excellence	Established to recognize outstanding and meritorious achievement in the environmental fields at its broadest sense. This may include, but is not limited to, street sanitation; refuse collection, disposal and recycling; sewers and sewage treatment; and water supply and water treatment. Individual candidates must be employed full-time by a public agency. APWA members or chapters may nominate.
Distinguished Service to Public Works Award	Established in 1935, as the Honorary Membership Award, this honor is regarded as the highest APWA honor. This award may be presented in recognition of acknowledged service and well-established preeminence in the field of public works, and/or contributions of special merit and benefit to APWA. Board members and past presidents of APWA must be out of office at least five years before being eligible for this award. A chapter resolution, petition of any 15 active members of APWA or any one or more of the APWA Board of Directors may nominate. APWA Membership is required.
Donald C. Stone Award for Excellence in Education	This award has a category for individuals and chapters. It was established to recognize outstanding and meritorious achievement of individuals assisting in the areas of continuing and graduate professional education for public works professionals, as well as, chapters in their work in delivering educational opportunities for all levels of persons engaged in the delivery of public works services. Chapter candidates must be members with active educational programs. Any active APWA member may nominate.
Harry S. Swearingen Award for Outstanding Chapter Achievement and Excellence in Chapter Service	Established to recognize outstanding individual achievement through chapter activity and achievement in support of APWA's strategic plan, goals, and objectives, as well as outstanding service to APWA as a public or private sector member at the chapter level. Individual candidates and corporate company candidates must be active members of APWA and actively involved at the chapter level for an extended period of time. Nominations must be made by chapters.
International Service Award	Established by the APWA International Affairs Committee, the APWA International Service Award recognizes an APWA member who has furthered the cause of international understanding and cooperation by becoming actively involved in exchanges, establishing a relationship with a public works entity from another country or providing outstanding public works service on an international basis.

Continued on Page 18

APWA Awards Committee, Continued from Page 17

The following awards require nominees be APWA members in good standing (continued):

Professional Manager of the Year – Administrative Management	Recognizes outstanding achievement in the area of Administration within the Public Works Department. Individual candidates must be APWA members with a minimum of 10 years qualifying experience.
Professional Manager of the Year – Engineering and Technology	Recognizes the outstanding career service achievements of engineering and technology professionals. Individual candidates must be APWA members with a minimum of 10 years experience whose primary responsibility is management of public works engineering and technology management.
Professional Manager of the Year Award - Facilities and Grounds	Recognizes the outstanding career service achievements of facilities and/or grounds management professionals. Individual candidates must be APWA members with primary responsibility in the management of public facilities and grounds and minimum of 10 years qualifying experience.
Professional Manager of the Year - Public Fleet	Recognizes the outstanding career service achievements of public fleet management professionals with the award's primary focus on exceptional leadership and management of public sector fleets. Individual candidates must be APWA members whose primary responsibility is in the management of a public works fleet and minimum of 10 years qualifying experience.
Professional Manager of the Year - Public Right-Of-Way	The Public Right-of-Way Manager of the Year award seeks to inspire excellence and dedication the public sector by recognizing the outstanding career service achievements of public right-of-way professionals. The primary focus of this award is the management of the public rights-of-way, which demonstrates that all stakeholders share the public rights-of-way in harmony and preserve them in the best interest of the public. Individual candidates must be APWA members with a minimum of 10 years public right-of-way management experience.
Professional Manager of the Year – Public Works Emergency Management	Recognizes the outstanding career service achievements of public works emergency management professionals. Individual candidates must be APWA members with a minimum of 10 years experience in a public works supervisory or management role.
Professional Manager of the Year - Solid Waste	Recognizes the outstanding career service achievements of solid waste management professionals. The primary focus of this award is recognition of exceptional management, operation, and maintenance of public sector solid waste operations. Individual candidates must be members of APWA with a minimum of 10 years qualifying experience.
Professional Manager of the Year – Transportation	Recognizes the outstanding career service achievements of public transportation professionals. The primary focus of this award is recognition of exceptional leadership and management by an individual through a significant transportation related project or program. Individual candidates must be members of APWA with a minimum of 10 years qualifying experience.
Professional Manager of the Year – Water Resources	To recognize outstanding accomplishments or achievements by individuals providing management in the field of water resources and whose contributions have had a positive impact on the profession of Public Works. Individual candidates must be members of APWA with a minimum of 10 years qualifying experience.

Continued on Page 19

APWA Awards Committee, Continued from Page 18

The following awards DO NOT require APWA membership. The intent of these awards is to focus beyond membership into the profession of public works:

<p>Abel Wolman Award</p>	<p>Established to recognize the best new book published in the field of public works history. This award is intended to provide encouragement and recognition to historians whose research and publications have made outstanding contributions to the history of public works. Books must be published during the preceding calendar year covering one or more public works topics are eligible. Individual authors or their publishers may submit a book for consideration.</p>
<p>Citation for Exemplary Service to Public Works</p>	<p>To recognize a non-member of APWA who is an eminent government or other public service leader for their far-reaching, positive impact on local, state or national public works programs, services, or policies through distinguished public service and commitment.</p>
<p>Diversity Exemplary Practices Award</p>	<p>To recognize individuals and organizations that has made outstanding contributions to diversity. Up to two awards may be presented annually in the following categories (one possible from each category):</p> <ol style="list-style-type: none"> 1) Individual 2) Program/organization <p>Officers and members of the APWA Board of Directors are not eligible during their service. A chapter, entity, individual member, or nonmember may nominate.</p>
<p>Excellence in Snow and Ice Control Award</p>	<p>Established to promote excellence in the management and administration of Public Works Snow and Ice operations. To promote the best practices in snow and ice removal while minimizing environmental impacts.</p>
<p>Exceptional Performance Award</p>	<p>Established to recognize individuals, teams or organizations in the areas of Adversity, Journalism and Safety whose outstanding contributions in the course of performance raise the level of public awareness of the profession. A chapter, entity, individual member, or nonmember may nominate. Exceptional Performance Award in Chapter Journalism recognizes chapters only.</p>
<p>Michael Robinson Award</p>	<p>This award recognizes the single best article published in the field of public works history. This award is intended to provide encouragement and recognition to historians and practitioners whose research and publications have made outstanding contributions to the history of public works.</p>
<p>Technical Innovation Award Management Innovation Award</p>	<p>Established to provide recognition for an individual, team or organization for the development and implementation of a creative idea, device, process or system that enhances the goals of public works in serving the public and protecting the environment. The award is open to anyone actively involved in the public works profession. Any public agency may nominate.</p>

IMPORTANT DATES:

January 23rd, 2012—Nomination forms due to KC Metro Chapter Awards Committee
February 6th, 2012—Award application packages due to KC Metro Chapter Awards Committee

Community Service Committee Update - from Pam Fortun, Committee Chair

THANK YOU to everyone who donated cans and cash to **Harvesters** at the November luncheon! We collected 46 cans and \$30 for the organization.



(pictured: Nikki Guillot, Pam Fortun)

We would also like to extend another big **THANK YOU** to everyone that donated toys to **Toys for Tots** at the Holiday Party! The kind generosity of our members was overwhelming! We collected 85 toys and \$100 on behalf of the charity...I can imagine lots of smiles and laughter on Christmas day because of our outstanding membership!



Donald C. Stone Center - 2012 Leadership and Management Courses



2012 is a leap year, so let that be your inspiration to leap forward in your public works career plans. APWA's Donald C. Stone Center has something for everyone with four programs in the Leadership & Management career path:

- Level 1 Public Works Supervisor (PWS)
- Level 2 Public Works Manager (PWM)
- Level 3 Public Works Executive (PWE)
- Level 4 Public Works Leadership Fellow (PWLF)

Earning the PWS, PWM, PWE, or PWLF designation provides national recognition that you have worked on the skills needed to be an effective public works leader. In the current job market, a credential that indicates your commitment to your profession will stand out on a resume.

APWA will offer three sessions of each level in 2012. Application deadlines and program start dates are shown below.

Application Deadline

January 17, 2012
April 16, 2012
July 16, 2012

Program Starts

March 14, 2012
June 13, 2012
September 12, 2012

Ready to get started on your professional development? Click [here](#) to get more information about the Donald C. Stone Center for Leadership Excellence in Public Works programs.

OTHER ANNOUNCEMENTS

2012 APWA KC Metro Board of Directors

The 2012 APWA KC Metro Board of Directors was installed December 14th, 2011 at the annual holiday party. This years board members are:

President - Dena Mezger	Director (1 st Year) - Jerry Johnson
Vice President - Robert Miller	Director (1 st Year) - Heidi Thummel
Secretary - Wayne Gudenkauf	Director-At-Large - Robert Kluender
Treasurer - Tim Ross	Delegate - Chuck Williams
Past President - Tom Rottinghaus	Alternate Delegate - Joe Johnson
Director (2 nd Year) - Rob Krewson	
Director (2 nd Year) - Bill Stogsdill	

The two new members to the board are 1st year directors Jerry Johnson and Heidi Thummel. See feature below and on next page - get to know your newest board members! If you have any comments, questions, or suggestions for the KC Metro chapter please contact any board member.

1st Year Director—Jerry Johnson

Name: Jerry Johnson (not to be confused with the 'other' Jerry Johnson)

Employer: City of Lee's Summit, Missouri—Bridge and Right-of-Way Supervisor

Number of years in the public works field: Nineteen years, the last seven have been in a supervisory position



Committee/activity/chair positions held in APWA: Nine years with the Snow Rodeo Committee. Rodeo Chair 2009-2010. Three years with the Mo/Kan Committee.

Why do you serve on the board? (or why did you get involved on the board): My supervisors introduced me to the Snow Rodeo and I was hooked - "I couldn't out drive them so I joined them". I feel compelled to help my fellow employees to keep up on the newest technologies and training available by interacting and sharing with the surrounding communities and vendors.

What is one goal you have for APWA this year: I would like to get more public works employees involved on committees.

In my free time, I like to: My wife Sherri and I are avid campers and spend several weekends each year at local State Parks with friends. We love country dancing and can be found doing that almost every weekend when we are not camping.

Other tidbits to share: My wife Sherri and I have been married for 30 years and have a son and a daughter. We have three grandchildren ages 4 years, 3years, and 6 months - all boys.

Continued on Page 22

2012 APWA KC Metro Board of Directors, Continued from Page 21

1st Year Director—Heidi Thummel

Name: Heidi Thummel

Employer: GBA Architects + Engineers, Market Development Manager. Duties include business development for the GBA Buildings and Site Development teams; corporate communications and social media; as well as public involvement for Transportation projects

Number of years in the public works field: 11 years with an A/E firm supporting public works projects.

Committee/activity/chair positions held in APWA: Having been a member since November 29th, 2001, I had to refer back to my application for Young Leader of the Year in 2008 to assemble a full list – but the point I am trying to get across is that there is a role for everyone, just contact a committee chair to volunteer!

Golf Tournament committee (2011-12)
Chair of the Myron D. Calkins Scholarship Committee (2006-11)
National Public Works Week Luncheon Committee (2007-11)
Arrangements Committee Volunteer (2007-10)
APWA Mid-Am, Design & Publication of Conference Materials (2008)
Annual Calendar Design for the Historical Committee (2006-07)
APWA Congress Volunteer in Kansas City (2006) and New Orleans (2008)
Editor of Pub News (2005-07)
Provided support for the 2011 Congress Bid (2005)
Guest speaker for the UMKC Student Chapter of APWA (2005, 2007)
Programs Committee Member (2002)

Why do you serve on the board? (or why did you get involved on the board): I have met so many great leaders through APWA, most of whom are past presidents and board members - to follow in their footsteps is a welcome opportunity.

What is one goal you have for APWA this year?: To fill all 144 spots in the golf tournament – mark your calendars for September 18th, 2012!

Other organizational involvement: Lenexa, Olathe, and Shawnee Chamber of Commerce and EDCs, Homeowners Association Board (2008-2010), Society for Marketing Professional Services Board (2003-04), Relay for Life Fundraiser and Participant (2005-present)

In my free time, I like to: Spend time with family, play tennis, travel, and be a “tourist” in my own city.

Other tidbits to share: Although I truly enjoy attending local chapter events, attending Congress is the highlight in many years – it is just great to travel and enjoy the camaraderie of our chapter members.



Heidi with husband Jarrett and daughter Joselyn (2 1/2 years old)

2012 FEED THE NEED CAMPAIGN

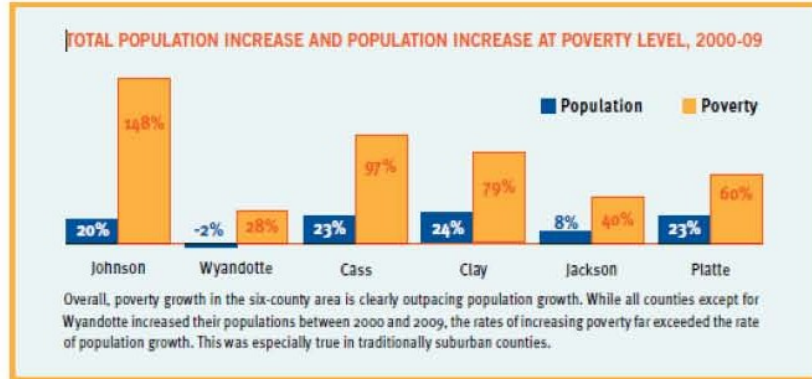


Department of Planning,
Development & Codes



Once again the numbers on poverty in Johnson County look grim. The number of people below the Federal Poverty Level in Johnson County **increased to an estimated 95,900 people** which is approximately **17.1% of the population** of the County. It is also **more total low income people than Wyandotte, Cass, Clay and Platte counties** (data from UCS Catalyst for Positive Community Change in Johnson County, Kansas).

Data from the United Way's Community Needs & Trends Assessment – Income Report show an even more vital need. While population has increased 20% from 2000 to 2009 the increase in **poverty level in Johnson County has increased 148%** over the same time period!



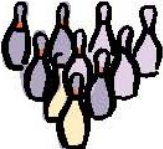

With projected increases yet again in 2012, the number of people needing assistance in Johnson County is greater than ever!

The Johnson County Government **Feed the Need Campaign** is an annual effort to meet this growing need by collecting food and monetary donations to support **10 local food pantries serving Johnson County citizens**.

Form or sponsor a team to help feed Johnson County citizens by participating and having fun!

2nd Annual Strike Out Hunger Bowling Bash!

Friday, March 9th 1:30-5:00 PM
Olathe Lanes East Bowling Alley
 303 N Lindenwood Dr, Olathe, KS 66062

The success of the 2012 Feed the Need - *Strike Out Hunger* - Bowling Bash depends on the participation of companies like yours. Any help you can provide will go toward reducing hunger in Johnson County. We have tried to keep things simple by providing an entry sponsorship of **\$175 per team** (includes 3 games and shoe rental for up to 5 team members) that will go toward the Feed the Need Campaign and an **optional prize fund sponsorship of \$25** to go toward items to be awarded during the event. **FEEL FREE TO SPONSOR MORE THAN ONE TEAM!**

PLEASE MAIL YOUR SIGN-UP SHEET AND CHECK BY FRIDAY FEBRUARY 24th!

If you have any questions or would like more information, please contact Pamela Hayhow at (913) 715-2216 or pamela.hayhow@jocogov.org or Geoffrey Vohs at (913) 715-8312 or geoffrey.vohs@jocogov.org

2012 FEED THE NEED CAMPAIGN

2nd Annual - *Strike Out Hunger* - Bowling Bash

Friday, March 9th 1:30-5:00 PM
Olathe Lanes East Bowling Alley
303 N Lindenwood Dr, Olathe, KS 66062

\$175.00 per Team Sponsorship (1 Team = 5 Bowlers)
(3 full games and shoe rental included)

\$25.00 per Team Prize Fund Sponsorship (Optional)

Firm Name: _____

Contact Name: _____

Address: _____

Contact Phone Number: _____

Contact E-mail: _____

Checks made payable to: Infrastructure Feed the Need

Federal Tax ID/EIN #: 20-2545236

Please send Form and Check to:

Johnson County Public Works

Attn: Geoff Vohs

1800 West Old 56 Highway

Olathe, KS 66061

PLEASE SUBMIT BY FRIDAY FEBRUARY 24TH 2012

If you have any questions or would like more information, please contact Pamela Hayhow at (913) 715-2216; pamela.hayhow@jocogov.org or Geoffrey Vohs at (913) 715-8312; geoffrey.vohs@jocogov.org



**Department of Planning,
Development & Codes**



Make Plans to Attend Now!

32nd Annual

Portland Cement Concrete Pavement Conference

February 29th - March 2nd, 2012

Downtown Marriott/Muehlebach Hotel

200 West 12th Street

Kansas City, Missouri 64105

816-421-6800

This years theme:

“Practical Pavement Solutions for Practical Times”

9.5 PDHs Available

Mark your calendars now and make plans to attend. Program, registration, sponsorship, and exhibitor information available on our website at www.moksacpa.com or by emailing Cindy@moksacpa.com or calling 913-381-2251.

Count on Concrete

NEW MEMBERS

Sarah Fjell (Unified Government of WYCO/KCKS)

Emily Kukal (City of Olathe, KS)

Lori Mundhenke (Unified Government of WYCO/KCKS)

Joseph Pettet (Advanced Drainage Systems)

Christopher Porras (City of Shawnee, KS)

Robert Rolle (Bentley Systems)

Anthony Sands (City of Gladstone, MO)

Becci Slavens (City of Lee's Summit, MO)

Rasa Trimmer (URS Corporation)

CHAPTER LEADERSHIP

KC APWA 2012 OFFICERS

President - Dena Mezger
Vice President - Robert Miller
Secretary - Wayne Gudenkauf
Treasurer - Tim Ross
Past President - Tom Rottinghaus
Director (2nd Year) - Rob Krewson
Director (2nd Year) - Bill Stogsdill
Director (1st Year) - Jerry Johnson
Director (1st Year) - Heidi Thummel
Director-At-Large - Robert Kluender
Delegate - Chuck Williams
Alternate Delegate - Joe Johnson

The APWA Pub News, a free publication of the Kansas City Metro Chapter of the American Public Works Association (APWA), is published in six issues throughout the year. To receive a free subscription, send an e-mail to cmorgan@hntb.com with "Beam Me Up!" in the subject line.

Publisher: Kansas City Metro Chapter of APWA
Editor: Shannon Jeffries
Staff: Tim Morgan

INTERESTED IN WRITING FOR THE APWA PUB NEWS?

The Pub News staff welcomes announcements, news articles, photos and suggestions. A new issue will be published in March. The deadline for the next issue will be Friday, February 24th, 2012. Deadlines will be strictly enforced. Electronic formats are preferred, but not required. Send your stories to Shannon Jeffries at shannon.jeffries@cityofks.net.

POLICY FOR THE USE OF THE APWA PUB NEWS, WEBSITE AND ELECTRONIC MAILING LIST

It shall be the policy of the KC Metro Chapter that the use of the "APWA Pub News, Website and Electronic Mailing List" by outside agencies shall abide by the following:

- Outside agencies, educational institutions, and not-for-profit organizations may utilize the Chapter's website for dissemination of approved items that are considered beneficial to our membership.
- Approval of these items may be granted by the Chapter President, the Newsletter Editor and the Website Committee. When requested, announcements from other organizations may be posted on the Chapter's website under "News" if the Newsletter/Communications Committee is provided electronic announcements in a format that can be posted without modification or editing.
- The Newsletter/Communications Committee may use the chapter's electronic mailing list for announcements to KC Metro Chapter members when the topic is related to an APWA activity or event. However, an announcement will not be sent before the Chapter event has been posted on the KC Metro Chapter website.

This policy was approved by the Executive Committee on November 19, 2008.

APWA 2012 COMMITTEE CHAIRS

Audit & Budget - Shane Standley
Awards - Mark Hartegan
By-Laws/MDC Symposium/Nominating/Past Presidents - Tom Rottinghaus
Chapter Meetings - Rob Kline
Communications and Publicity - Tim Morgan
Community Service - Pam Fortun
Diversity - Nikki Guillot and Gary Strack
Education & Training - Jason Meyers
Emergency Management & Homeland Security (PET) - Bob Hartnett
Emerging Leaders - Damon Hodges
Engineering & Technology - Michael Haake
Facilities & Grounds - John Skubal
Fleet Services - Howard Mann
Golf Tournament - Heidi Thummel
Governmental Affairs—Joab Ortiz
Historical - Ernie Longoria
Holiday Party - Joab Ortiz and Eric Strack
K-12 Student Outreach—David Smalling
Leadership & Management - Mike Beezhold
Membership - Scott Cogan
Membership BBQ & Steak Fry - Bob Rolle
Mid-America Conference - John Frerking
Mo-Kan Street Superintendent - Robert Kluender
Myron D. Calkins Scholarship - Shannon Jeffries
National Public Works Week - Ryan Fleming
Snow & Equipment Training Expo - John Merkle
Solid Waste Management - Nadja Karpilow
Standards & Specifications - Leon Staab
Student Chapter - Daniel Brown and Hillary Fellows
Sustainability - Scott Parker and Ann Schroer
Transportation - Bob Netterville
Utility & Public Right-of-Way - Ted Ingalls
Water Resources Management - Brenda Macke

Appointments, Liaisons, and Coordinators

ACEC/APWA Partnering - Mike McKenna and Brian Pietig
Calendar/Events Coordinator - Becci Slavens
International Affairs - Larry Frevert
Joint Engineers Council - Jim Foil
MCIB/KCMMB - Todd LaTorella

For contact information, visit: <http://kcapwa.net>