

IN THIS ISSUE

WHAT'S INSIDE

President's Perspective..... 2
 Delegate Details..... 3
 Techno Minute 4
 Recent Events..... 5
 Upcoming Events..... 7
 Committee Announcements... 12
 Other Announcements 15
 Chapter Leadership..... 18



Myron D. Calkins Scholarship Applications Available Now!

See page 12 for details.

Looking for a summer intern? See page 13!

March Chapter Meeting (Joint meeting with ASCE)
 Wednesday, March 19th, 2014, 11:30 AM

See page 7 for details.



Public Works Institute - Module I
 April 8th-10th, 2014

See page 9 for details.

2014 APWA Mid-America Conference & Exhibit Show
 May 21st-23rd, 2014, Overland Park, Kansas

See page 10 for details.

NPWW Luncheon

May 22nd, 2014, Overland Park Convention Center

See page 11 for details.

**2013 PACE
AWARD
RECIPIENT**

**17 YEARS
IN A ROW!**

2014 ANNUAL SPONSORS



PRESIDENT'S PERSPECTIVE

FROM WAYNE GUDENKAUF

As I prepare the President's Perspective, the weekend forecast includes temperatures from -8°F to 47°F and chances of rain, snow showers, and snow accumulating up to 15 inches. This will be Snow Event #11 and is sure to be another challenge for Public Works. Please say thank you to the dedicated Public Works employees that clear the roads and make them safer for motorists. Thank you!

The Kansas City Metro Chapter has been busy since the first of the year and has many events scheduled for the upcoming months.

Ted Semadeni, Nick Arena, and Tom Audley with the City of Lenexa, Kansas presented *Using Technology to its Fullest Potential* at Zarda Bar-B-Q during the January Chapter luncheon. They shared how the City of Lenexa, Kansas is using iPads to enhance the productivity of staff at all levels.



Burt Morey with KDOT and Joe Brand and Stephanie Hemberger with HNTB presented *The Johnson County Gateway Interchange Update* at Hilton Garden Inn Olathe during the February Chapter luncheon. This Phase 2 Project, at \$288 million, is the first major design-build transportation project for KDOT. On January 10th, KDOT selected the design-build team of Gateway Interchange Constructors.

On March 19th, there will be a joint luncheon with the American Society of Civil Engineers at the Grand Street Cafe. Monty Zimmerman with the City of Lenexa, Kansas and Murv Morehead with the City of Overland Park, Kansas will present *Right-of-Way Management Overview*. Monty and Murv will discuss proper right of way management techniques as practiced by area cities.

Congratulations to our Chapter award winners!

Top Ten Public Works Leaders of the Year

- Dennis Randolph, P.E., PWLF - City of Grandview, MO

Young Leader Award

- Therese Mersmann, P.E. - City of Olathe, KS

Project of the Year: Transportation

- < \$5 million | North Indiana Improvements | Kansas City, MO | Walter P. Moore | Gunter
- \$5 - \$25 million | Metcalf Avenue | Johnson County, KS Transit & Partners | Olsson Associates | Various Contractors
- \$25 - \$75 million | Little Blue Parkway | Independence, MO | Burns and McDonnell | Radmacher Brothers

Project of the Year: Structures

- < \$5 million | Grandview Civic Plaza | Grandview, MO | Landworks Studio | Fleshman

Project of the Year: Historical Restoration/Preservation

- \$5 - \$25 million | Truman Courthouse Renovation | Jackson County, MO | Piper-Wind | Universal

Sustainability Practice Award

- City of Lee's Summit, MO | Waste Diversion Expansion

Management Innovation Award

- City of Fairway, KS | Bob Mapes Streetlight Program

Snow and Ice Control

- City of Lenexa, KS

The Chapter awards will be presented at the April Chapter luncheon and these award winning submittals have been nominated by the Chapter and submitted to National APWA for consideration.

Continued on Page 3

President's Perspective, continued from page 2

The Spring 2014 Public Works Institute module will be Module I - Supervision Essentials. Now is a great time to get involved if you haven't participated yet. Module I will be offered from April 8th through April 10th at the Lee's Summit Public Works Maintenance Facility for \$300 per participant.

National Public Works Week is May 18th through May 24th and the May Chapter luncheon will be held during the Mid-America Conference & Exhibit Show.

Our Chapter has over thirty committees and I encourage you to find a committee that interests you and get involved. Please invite a coworker, client, or Councilmember and join us at the Chapter luncheons. We've had really good attendance at the January and February luncheons.

Thank you for the service you provide, especially those that clear the roads and make them safer.

DELEGATE DETAILS FROM JOE JOHNSON

As I write this we have just come out of some of the worst winter weather not only here but across our Nation. I want to take this opportunity to thank all those in Public Works for their dedication in keeping our streets clean, the vehicles running and taking hundreds of calls from our citizens. It's a team effort and no one does it like Public Works.



Spring for APWA is always the time of year that nominations are accepted for national appointments to committees, election of regional directors and president-elect. The Kansas City Metro Chapter has always been well represented at the National level. Members can self-nominate for the committees or be nominated by others. If you have interest in serving at the National level nominations are open now and the required information is due by close of business on April 1st. For more information or to nominate yourself go to: <http://www2.apwa.net/MembersOnly/Nominations/>. Questions can be directed to Cindy Long (clong@apwa.net).

The Chapter along with Missouri, Iowa, Nebraska and Kansas once again are hosting the Mid-Am Conference held May 21st-23rd at the Overland Park Convention Center. If you have not already signed up you can go to the Chapter's web site to view the agenda and register. With 5 Chapters, the event will fill up quickly. As part of the Mid-Am Conference we will also celebrate National Public Works Week with a luncheon of all 5 Chapters. You will get to take part in celebrating National Award Winners from all Chapters, so please sign up to be part of this great celebration of Public Works.

As with any organization membership is always a topic of discussion. Membership at the National level ending in January is projected to be 28,425. This represents a slight decrease compared to last month of 105 members. Member retention overall was at 87% through December, a slight increase over last month. The Chapter's membership is holding steady at approximately 744 members. The Executive Board is working hard in the area of membership and retention and welcomes any assistance from our members. You may contact me or any of the Chapter leaders on our web site with ideas.

The House of Delegates is going through some changes to be more viable in addressing issues at the National level and the Chapter level. The HOD Refocus Task Force met at APWA Headquarters in Kansas City on February 27th-29th. They will continue their work to develop the Council of Chapters, its Committees and Work Groups and operational plans, and will review information submitted by delegates and alternates via a recent survey. The new Council of Chapters will begin their work at the 2014 Toronto Congress.

Steve Hansen and I will be off to Branson at the end of March for the Spring Delegate meeting. This year the Metro Chapter and Missouri Chapter are hosting the event that will have members from Regions 8 and 9 attending. One of the main topics of discussion will be on the refocus of the House of Delegates. Other topics include National priorities, professional development, advocacy and chapter capacity support.

On a final note, this year Congress is in Toronto, Ontario, Canada and everything is coming together very well. This should be a great international event. If you do sign up make sure your passport is up to date or apply for one. You need to start now to have it for August. The Dates for Congress are August 17th-20th. This should be a great event to view the latest technology and equipment, take advantage of the many educational opportunities, and network with your peers from around the country and the world.

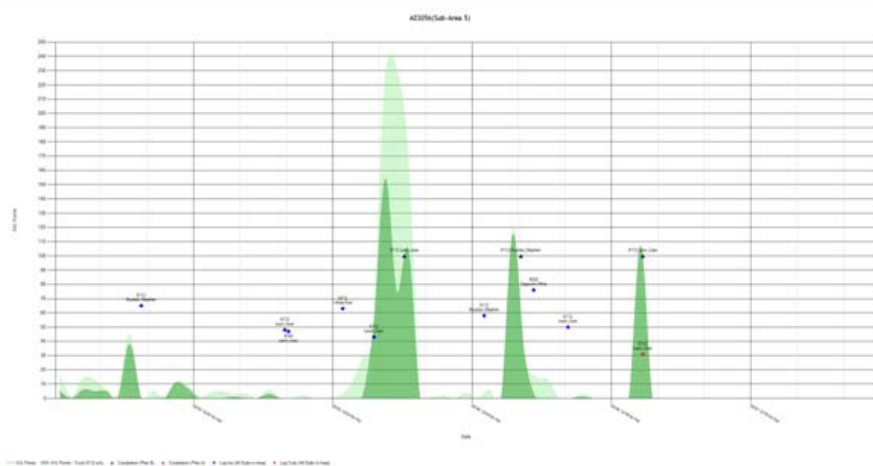
TECHNO MINUTE

FROM MIKE ROSS

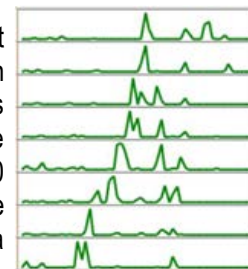
A recurring statement we hear from our residents during snow season is that “my street is ALWAYS last.” Overland Park prioritizes our high-volume roadways, and once those are open, we plow our local streets. These are divided into areas, and within each area into subareas. These subareas are numbered and drivers are instructed to follow either a forward or reverse sequence. In the interest of fairness, we switch the sequence after each storm. There could be any number of reasons for the perception of being last; houses on cul-de-sacs may be within sight of thoroughfares or collectors that are our first priority. What may be most unfair is that those in the middle stay in the middle and seldom are either first or last. Doug Brown asked that we analyze our data to determine if we could easily determine the accuracy of the perception. That effort is the basis for this article.



We collect a lot of AVL data – each truck drops an AVL breadcrumb every 15 seconds while they’re working. Each breadcrumb is post-processed to determine what street it dropped on, and from each breadcrumb we know who the driver is, what speed they’re travelling, and in what direction they’re headed. A driver that worked without stop in a sub-area should drop $4 * 60 = 240$ breadcrumbs every hour. Since the data is all stored in a SQL database, queries that count records make it easy to determine how much work we did in any given subarea, and when that work occurred. Here’s a plot of breadcrumb count (Y axis) vs. time (X axis). It’s too small to read, but you get the idea. Each vertical line represents a 12 hour block of time so, from this, you can see that we were working over a period of about 30 hours – if you ignore the smaller “blips” to the left. This was the big storm event early in February. We got 10 to 12 inches of snow and then high winds caused drifting that required us to return several times over the next day to clean the streets. The plot shows the largest work effort done by the assigned truck (dark green) and a “helper” truck (the light green). The assigned truck returned and did less work after 12 hours and then again about 12 hours later.



Regarding the sequence issue, we could produce detailed plots of each subarea and then compare them, but a better solution involved the use of “[sparklines](#)”. These are unlabelled trendline plots that can be embedded in reports or tables. Here is a snip from a table showing all 8 subareas in one of our areas. This again shows AVL breadcrumbs (Y) over time (X) and, in this case, the pattern clearly shows that we progressed from the bottom up – the reversed subarea sequence. This illustration came from a custom application, but the 2010 version [of Excel includes an ability to generate sparklines](#) within spreadsheets. According to Wikipedia, the concept originated within the stock market, and you can imagine that being able to plot the daily values of a stock portfolio would be very useful.



In our case, the analysis was complicated by trucks that broke down and by the fact that drivers from other areas completed their assignments and then helped those that weren’t done – generally by starting at the opposite end of the subarea list. Our drivers communicate to a dispatcher when they’ve completed an area, the delay between completion and this message may give the public a distorted view of completion order, especially those that study our on-line snow map, watching as each subarea gets colored in as complete based on a report from the driver.

Our conclusion was that snow operations are complicated and difficult to convey in very simple terms; that analyzing the data provides insights that should help us improve our operations; and that visualizing the data using sparkline plots gives a quick and easy way to view work progress. In addition to showing us what work has been done by looking at AVL breadcrumbs, analyzing this same data in other ways may help us to better plan our operations – an additional and unintended benefit of AVL technology.

Past President George Crombie Passes

APWA Past President George R. Crombie, MPA, BCEEM, PWLF passed away on Sunday, February 23rd, 2014 at his home in Plymouth, Massachusetts. He served as APWA National President August, 2010 - September, 2011, and on the Board of Directors from 2004 to 2012, including as At-Large Director- Environmental Management, and was named one of APWA's Top Ten Public Works Leaders of the Year in 2002.

KCMetro Chapter Member Joab Ortiz shares this memory of Mr. Crombie:

On December 16th, 2009 I met George Crombie as I picked him up from the airport for our annual Holiday Party. I was new to APWA and didn't know what to expect of an incoming President for National. We had a nice conversation in which I told him I was new to the APWA. He began telling me his story of APWA and how he had come to embrace the organization. Through his passion, I was enlightened and encouraged to get more involved. The next day, on our way back to the airport, he asked me to submit an application to serve on the Government Affairs Committee. George said that even though I'm not an engineer, Public Works has a variety of professions that it employs and they all need to be represented. He believed the diversity of thought, would help us grow. I submitted my application, and was appointed to the APWA National Government Affairs Committee in 2010. After that, whenever I saw George, he'd go out of his way to see how I was doing and thank ME for being a part of the organization. Today I want to thank him. Rest in Peace my friend, rest in peace.

*Joab Ortiz
KC Chapter Government Affairs Committee
APWA National Government Affairs Committee*

Memorial services for George Crombie will be held March 15th, 2014.

In lieu of flowers donations can be made to the following:

Ace Bailey Children's Foundation
135 Langdon Street
Providence, RI 02904

or donations made on line at <http://www.acebailey.org> by clicking on the heart that reads donate. This foundation was set up to support families and children at Tufts Medical Center

Or

"NEC-APWA PW Education Fund"
New England Chapter APWA
C/O "NEC-APWA Public Works Education Fund"
894 Pleasant Street
East Weymouth, MA 02189

Funds will be used for the "George Crombie APWA Emerging Leaders Academy Scholarship".



RECENT EVENTS

Education and Training Committee Event - from Todd Thalmann

Self Assessment Using the Public Works Management Practices Manual-A Tool for Improving Operations and Management Workshop



The Kansas City Metro Chapter hosted an APWA Accreditation Self Assessment Workshop on February 20th. The workshop began at 8:30 am and wrapped up around 3:45 pm. According to APWA's web site, "The purpose of the accreditation program is to provide a means of formally verifying and recognizing public works agencies for compliance with the recommended practices set forth in the Public Works Management Practices Manual." This can help raise the standards by which an agency operates, help recognize good performance and motivate people to improve their performance, improve the provision of services and instill pride among agency staff, elected officials and the communities they serve.

There were 20 members of the public works community representing seven agencies from the metro and beyond. The agencies represented were:

- Coffeyville, KS
- Fairway, KS
- Grandview, MO
- Hutchinson, KS
- Kansas City, MO
- Lee's Summit, MO
- Shawnee, KS



Ann Daniels, from APWA National offices, facilitated the day-long session. Ann has done hundreds of these workshops across the country and was actually passing through her home base of Kansas City just to facilitate this workshop! She indicated the group was very engaged and received the information in a very positive manner.

In addition to expressing our appreciation to Ann for facilitating, a special "thank you" goes out to Chuck Williams from the City of Lenexa and specifically Lenexa Fire Station No. 3 for hosting the workshop. Their efforts helped make this a successful educational experience!

UPCOMING EVENTS

ASCE | Kansas City

AMERICAN SOCIETY OF CIVIL ENGINEERS

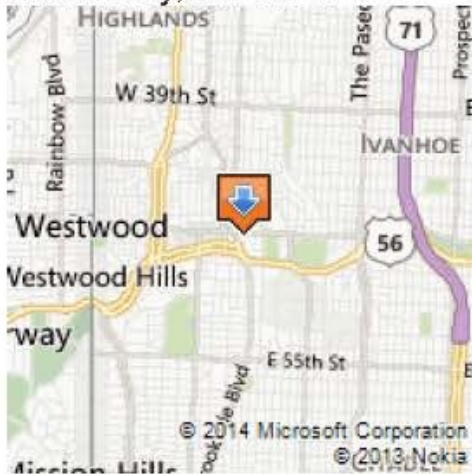


When

Wednesday March 19, 2014 from
11:30 AM to 1:30 PM CDT

Where

Grand Street Cafe
4740 Grand Ave
Kansas City, MO 64112



Joint Meeting with APWA

Presentation - Right of Way Management Overview

Date: Wednesday March 19th, 2014

Location: Grand Street Cafe
4740 Grand Ave
Kansas City, MO 64112

Time: 11:30 Social/Registration
12:00 Meal
12:30 Presentation

Menu: Roasted Pork or Grilled Chicken Breast
Whipped Potatoes
French Green Beans
Roll and Butter
Tea or Soda
Cookie

Cost: \$25.00 per person

APWA's Community Service Committee is collecting non-perishable foods. Come on out and support a good cause.

Presentation: Right of Way Management Overview

Description: In light of the recent findings in the JJ's restaurant investigation; Monty Zimmerman and Murv Morehead will discuss proper right of way management techniques as practiced by area cities.

Speaker: Monty Zimmerman, City of Lenexa & Murv Morehead, City of Overland Park

Visit KC Metro APWA Website for a link to ASCE's registration site.

MoKan Assoc. Meeting

March 27, 2014

9:00 A.M. to 2:00 P.M.

Cost: \$20.00

Lenexa National Guard Armory

18200 W. 87th St. Pkwy.

Lenexa, Kansas

8:30 – 9:00 -- Registration

9:00 – 10:15 -- Snow Plow Panel & group discussion

(Bruce Taylor, City of Lee's Summit)

(Kevin Browning, City of Blue Springs)

(Brian Hutchinson, City of Overland Park)

(Rob Kluender, City of Olathe)

10:15 – 10:30 -- Break

10:30 – 11:45 -- Snow Plow Panel & group discussion (Cont.)

11:45 – 12:45 -- Lunch (will be provided)

12:45 – 1:15 -- Asphalt Repair Techniques

(Matt Cabrera, Vance Bros.)

1:15 – 1:45 -- 30# Micro Seal Process

(Howie Snyder, Vance Bros.)

Register by March 24, 2014

Contact: Rob Kluender

City of Olathe

rlkluender@olatheks.org

(913) 971-6012

Public Works Institute - Module I, Basic Supervision Essentials, April 8th-10th, 2014

The KC Metro APWA Chapter's Public Works Institute will be presenting "Module I - Basic Supervision Essentials" over three days, April 8th-10th, 2014 at the Lee's Summit Public Works Maintenance Center, 1971 SE Hamblen Rd., Lee's Summit, MO 64082. Although it is not necessary that the modules be taken in any specific order, this is Module I, which starts the four module series. It will cover the essentials that public works supervisors and managers and aspiring supervisors and managers need to supervise other employees.

Sessions will run from 8:00 to 5:00 each day, with a continental breakfast served at 7:30 AM. Lunch meals and break food as well as notebooks containing a print of all presentations will be provided to each attendee. The fee for the three day training session is \$300.

Further details regarding topics to be covered, guest speakers, and registration details will be available on the KC Metro APWA website, <http://kcmetro.apwa.net/>, beginning March 17th, with registration open from March 17th through April 4th.

Questions can be addressed to:
Larry Frevert, PE, PWLF
Public Works Institute Director
KC Metro APWA Chapter
lwfrevert@gmail.com
816.582.9236



Save the Date!!!

ANNUAL KC METRO GOLF TOURNAMENT SEPTEMBER 23RD, 2014



2014 APWA Mid-America Conference & Exhibit Show

When: May 21 – 23, 2014

Where: Overland Park Convention Center - Overland Park, Kansas

This spring's *Mid-Am Conference* is rapidly approaching, and though you would never guess from the weather, it will be here before you know it. So far, nearly 50% of our booth spaces are reserved (with prime booth locations at a premium!). Online conference registration was announced the final day of January and before the end of February, over fifty persons had registered. I won't tell you which Chapter is ahead in registrations, but I will say: **WAY TO GO KANSAS CHAPTER!!** for no particular reason.



You may not know this, but the Mid-Am is one of the first events to use APWA National's new website template. This has resulted in "issues" with the online registration process. If you are one of those that has experienced frustration with the website, please accept our apologies. On the flip side of the coin, we are doing *WAY* better than *HealthCare.gov*, and we spent somewhere south of \$300M to get things up and running...nevertheless, we are sorry for any inconvenience. If problems persist, contact information for persons that can assist with registration for exhibit space or the conference itself are provided on the website, or you can contact me and I'll point you in the right direction (contact information below).

Make it a Stay in Kansas City!

The Kansas City area will have a lot going on during and after the Mid-Am Conference, including:

- ◆ **Royals Baseball:** The Kansas City Royals will take on the Chicago White Sox at Kauffman Stadium on Wednesday, May 21st. First pitch is at 8:10 p.m.
- ◆ **Worlds of Fun:** If you want something for the kids to do, this long-time KC attraction opens in early May. If you stay after the conference, both **Oceans of Fun** (Missouri-side) and **Schlitterbahn** (Kansas-side) waterparks open the same weekend.



For a comprehensive list of things that can be part of your trip to Kansas City in May, visit the following website:

<http://calendar.kansascity.com/search/date/2014-05-01>

APWA 2014 Mid-America Conference Communications Committee Chair:

John Frerking

Engineering Surveys and Services – Columbia, Missouri

W: (573) 449-2646 / jfrerking@ess-inc.com

Mid-Am Home Page: <http://kcmetro.apwa.net/MenuHomepage/144/2014-Mid-America>



2014 National Public Works Week Awards Luncheon

2014 National Public Works Week Awards Luncheon

Thursday, May 22nd

Overland Park Convention Center

7:00AM Mid-Am Exhibit Hall Open

11:30AM Luncheon Doors Open

Mark your calendar now to attend the National Public Works Week (NPWW) Luncheon hosted by the APWA Mid-America Conference and the KC Metro Chapter of APWA on **Thursday, May 22nd, 2014**, at the Overland Park Convention Center.

Registration deadline is Friday, May 9th - To register yourself or a group to attend the luncheon, please visit <http://kcmetro.apwa.net/EventDetails/704> to complete the online registration form via the Mid-Am Conference website. **Special Note to 2014 Annual Sponsors and Mid-Am Conference Attendees:** If your organization is a 2014 Annual Sponsor of the KC Metro Chapter, a table of ten (10) at the NPWW Luncheon is included. Full and Thursday Only registrations for the Mid-Am Conference include attendance at the luncheon. Please plan your number of attendees from your organization accordingly.

Slideshow Presentation - In addition to the annual National Awards Presentation, a slideshow presentation will feature various projects from throughout the Kansas City area. If your organization has recent public works projects to showcase during the luncheon, please submit your PowerPoint slides to Paul Lindstrom at plindstrom@ci.shawnee.ks.us by Friday, May 2nd. Please limit submittals to one project per slide, and include the project name, a picture/rendering, names of the organizations involved, and the date the project was constructed or will be constructed. If you would like to send a CD, please mail to: Paul Lindstrom, Shawnee City Hall, 11110 Johnson Drive, Shawnee, KS 66203. We reserve the right to limit the number of submissions.

Proclamations from Local Municipalities - Local municipalities are asked to provide a signed proclamation from the governing body declaring the week of May 18th-24th, 2014, as National Public Works Week. A display board will be provided to showcase the proclamations. Please bring the proclamation from your municipality to the luncheon on May 22nd. For more information about proclamations, please contact Dan Brown by email at DLBrown@walterpmoore.com or by phone at (816) 701-2100.

Free Parking – Located north of the OP Convention Center. No validation required.

For questions about the luncheon, please contact the NPWW Committee Chair, Dan Brown by phone at (816) 701-2100 or by email at DLBrown@walterpmoore.com.



COMMITTEE ANNOUNCEMENTS

2014-15 Myron D. Calkins Scholarship - from Shannon Jeffries

Myron D. Calkins Scholarship Applications- Due Friday, April 11th, 2014

The Myron D. Calkins Scholarship Committee is now accepting applications for the 2014-15 year. The scholarship award has been increased to a \$1,500 this year! Applicants interested in this scholarship must be:

1. Enrolled in a graduate or undergraduate education or trade school program that relates to public works.
2. Enrolled in a minimum of three (3) credit hours or an accredited program for the duration of the scholarship.
3. Applying to complete a certification program through APWA (or other agencies upon approval), including but not limited to the following: Certified Stormwater Manager (CSM), Certified Public Fleet Professional (CPFP), and Certified Public Infrastructure Inspector (CPII). More information can be found online at: <http://www.apwa.net/certification/>.

The application is available to download from the KC Metro Chapter's website:

<http://kcmetro.apwa.net/MenuHomepage/126/Scholarship>

If you have any questions, please contact Shannon Jeffries at (816) 969-1800 or shannon.jeffries@cityofks.net.



K-12 Student Outreach

City of Lee's Summit staff recently participated in two career days at local high schools. The career day events provided the opportunity for public works employees to meet high school students and discuss opportunities in the field of public works. A slide show presentation walked students through all aspects of public works from planning, engineering, maintenance and operations. Presenters were able to highlight the broad range of opportunities for employment in the field of public works.

The first outreach activity was held at Lee's Summit North High School on February 12th, 2014. The second outreach activity was held at Lee's Summit West High School on February 13th, 2014.

Thanks to Mike Anderson, K-12 Student Outreach committee member, for organizing and presenting at these two events and to Matt Haug, Shannon Jeffries, and Jerry Johnson for serving as presenters.

The K-12 Student Outreach committee encourages chapter members to look for opportunities to speak to students about public works. If you know of an upcoming event that you think may be a good fit for the committee contact David Smalling, committee chair, at dsmalling@skw-inc.com.



Member Spotlight



Joab Ortiz, IAP2 - Public Involvement Project Manager

Burns & McDonnell, Stakeholder Management Services
Chair, Government Affairs Committee
Member, National APWA Government Affairs Committee
Member, Holiday Party Committee
Member, Communications and Publicity Committee



Why did you choose public works as your career field?

I see myself as the storyteller for public works. Since joining Burns & McDonnell I've discovered all the things that PW does and it amazes me. In an era of budget fights and spending cuts, I believe it's important for the PW story to be told to our elected officials and the public.

What would someone find interesting about your job?

What people tend to find most interesting about my job is the diversity of people that I talk to on a daily basis. From farmers and residents to business owners to government officials, our work impacts everyone and everyone needs to understand the value.

What is your hobby or outside interest?

I like to run ½ marathons. The training gives me 'thinking time' and the races give me a sense of accomplishment. Of course family time is a big outside interest as well. .

What does diversity mean to you and how does it affect your job?

PW affects entire communities. The diversity within those communities is reflected in every neighborhood, community group and elected official they represent. It's my responsibility to convey our message to them all about the good works that PW does in every community.

LOOKING FOR A SUMMER INTERN? MAYBE WE CAN HELP!

Phil Herrman, KC Metro APWA Student Chapter Committee Chair, has been working hard to expand the presence of APWA on the UMKC campus. He has had the opportunity to meet with several students, many whom are considering careers in public works/engineering and are interested in a summer internship. If your company is looking for a student intern, please contact Phil at jpherrman@burnsmcd.com or 816-627-6110. If a student asks about internship opportunities, he would be glad to pass your company's information on. Phil is committed to student outreach efforts in the community and to providing opportunities for APWA education and careers, and this is a great way to further that effort!

KC Metro Chapter Committee Needs

Looking for a way to get involved in APWA? The Chapter has several opportunities to choose from with over 30 active committees. Pick your interest and get involved! Please contact the committee chair listed directly. Additional committee information can be found on the chapter website: www.kcmetro.apwa.net.

Audit and Budget Committee - Alysen Abel/alysen.abel@opkansas.org/913.895.6025 - This committee assists in drafting the chapter budget and conducts an audit of chapter financial records.

BBQ/Steak Fry - Bob Rolle/bob.rolle@bentley.com/816.679.1795 - This committee is looking for members and will need a new chair in 2015 - a great way to get involved! This committee helps plan the membership BBQ and steak fry events.

Chapter Meetings - Rob Kline/rkline@gbateam.com/913.577.8376 - This committee assists in planning chapter meetings and meeting registration/check-in. Assistance is provided for other chapter events as needed.

Communications and Publicity - Tim Morgan/cmorgan@hntb.com/913.312.4866 - This committee could use members interested in assisting with publicity of the chapter, especially with local media outlets. The committee is also looking for a Pub News editor.

Community Service - Shawn Graff/shawn.graff@cityofls.net/816.969.1827 - This committee helps the Chapter to “give back” to our community through charitable work that is Public Works related.

Diversity Committee - Rebecca Bilderback/rbilder@sbcglobal.net/913.710.6618 - The Diversity Committee is looking for new members to help showcase the diversity of the chapter. The committee has six committee meetings via conference call each year. The main events for the committee include putting together an informal breakfast mid-year with the MO-KAN Superintendents Committee and finding a speaker for one monthly chapter meeting.

Emerging Leaders - Nathan Hladky/hladkynw@cdmsmith.com/816-412-3104 - The Emerging Leader Committee helps plan programs to encourage young Public Works professionals to become more active in the leadership of the Chapter.

Engineering and Technology - Michael Haake/mhaake@walterpmoore.com/816.701.2100 - This committee is looking for members as well as a new co-chair or char. If you are looking to be a committee chair in 2014 or 2015 this would be a great opportunity. The Engineering and Technology Committee locally advances the missions of the national Engineering and Technology Committee.

Historical - Ernie Longoria/ernie.longoria@opkansas.org/913.895.6258 - This committee maintains the historical records of the chapter in a usable order and provides this information to the chapter membership as required.

Leadership and Management - Eric Strack/estrack@hntb.com/816.527.2474 - This committee plans and develops local activities of interest to their membership, and coordinates with the parallel national committee.

Student Chapter - Phil Herrman/jpherrman@burnsmcd.com/816.627.6110 - This committee assists in introducing college students to Public Works-related fields and the benefits of involvement with APWA. The committee works directly with the UMKC student chapter.

Sustainable Infrastructure - Anne Schroer/aschroer@gbateam.com/913.492.0400 - This committee works to raise awareness around the issue of infrastructure management to pave the way for sustainable infrastructure opportunities and education in the Kansas City area while supporting the triple bottom line – a balance of environment, equity and economics.

Transportation - Jim Wingert/jwingert@transystems.com/816.329.8600 - The Transportation Committee plans and develops local activities of interest to the membership and coordinates with the parallel National Committee.

Water Resources Management - Chad Johnson/cjohnson@oaconsulting.com/913.381.1170 - This committee focuses on gathering and disseminating information and educating industry professionals on regional stormwater issues. The WRMC works to coordinate beneficial change on a regional basis through workshops and sub-committees.

OTHER ANNOUNCEMENTS



2014 Pervious Concrete Technician Certification

April 16, 2014

9:00 am Start
Geiger Ready Mix Olathe Plant
875 E Highway 56
Olathe, KS 66061
Concluding about 3:00 pm

This is the only pervious certification planned in first half of this year.

Certification is Required for:

- Contractors
- Ready Mix

Optional but Encouraged for:

- Inspectors
- Engineers
- Architects
- Stormwater Personnel
- Other Industry Personnel

Certification is valid for 5 years before renewal is necessary.

Continuing Education Credits:
4 PDH's Engineers
4 AIA-HSW Architects
4 Contractor Licensing Hours

The Pervious Certification includes:

- Brief pervious concrete history
- Tools/equipment used for placement
- Placement and finishing techniques
- Curing and the timing of curing
- Basic layout and depth design
- Basic mix design & materials
- Overview of ASTM testing
- Maintenance
- Resources and local guidelines
- Stormwater compliance, local codes
- Testing and Quality Standards
- Specifications
- Pre-Construction Meetings
- Checklists

The classroom session will be followed by a 30+ question, multiple choice written exam and lunch. After lunch there will be a hands on field placement, with everyone in the class participating. All participants should come prepared to place some pervious in the afternoon field placement portion of the certification. Wear clothes that can get dirty and bring gloves, work boots, etc. Contractors please bring a come-a-long or a square-nosed shovel.

All those who pass the classroom test (minimum of 80% or better) and participate in the hands-on training, will receive a certificate and a pocket ID card, stating they have successfully completed the course. This certification is required per specifications on most pervious concrete projects. Contractors must have a supervisory Pervious Technician Certified Employee on the jobsite while pervious concrete is being placed. Certifications are revocable in the event of poor workmanship, or failure to follow the procedures outlined in the Pervious Concrete Training. Certification does not guarantee workmanship or quality, but does indicate a minimum knowledge of the subject matter by passing the exam and participating in the correct field placement. All jobs are required to follow the specification for that specific job. CPG and MO/KS ACPA have a Specifiers Guide to Pervious Concrete in Kansas City available to all designers, owners, contractors, etc. for strong suggestions on designing and constructing pervious in our market. It can be found on our website www.concretepromotion.com.



10707 Barkley, Suite A
Overland Park, KS 66211
913-341-5800 ph
913-381-4958 fx

www.concretepromotion.com

Reservations:

Cancellations must be received two days before the class for a full refund. Substitutions can be made at anytime. Payment must be received before certification date.

Name Main Contact _____
Name _____
Name _____
Name _____
Name _____
Company _____
E-mail _____
Phone _____

- Non-members, two people (same price as one)
- Non-members, per additional person
- CPG & MO/KS ACPA members only
- Per additional member only
- Municipal Inspector (on municipal payroll not consulting company or independent consultant)
- Municipal Engineer, Stormwater Engineer, Landscape Architect (on municipal payroll not consulting company or independent consultant)

Fees:	
	\$500.00
	\$100.00
	\$250.00
	\$100.00
	\$ 50.00
	\$ 50.00

Check payable to CPG

Total: _____

April 17, 2014
 12 noon to 3 pm
 ITT Technical Institute
 7600 West 119th St.
 Suite A
 Visitors Entrance
 Overland Park, KS
 66213

Exclusively for: Designers, Architects, Engineers

Bring your laptop!

What's Equal?

When converting asphalt to concrete pavement, what thickness is equal?

Where can we find more information or resources?

Come to this training and find out where you can get your hands on more resources!

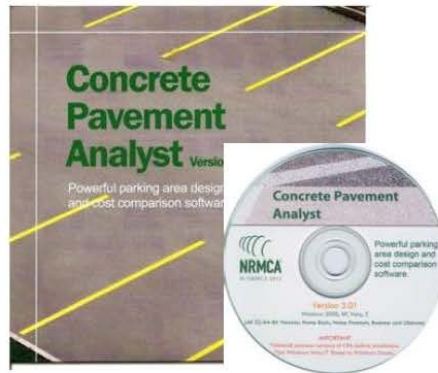
What do I need to bring with me to the seminar?

Laptop Computer
 Notepad & Pen for Notes
 An Open Mind



913-341-5800 ph
 10707 Barkley, Suite A
 Overland Park, KS
 66211

Software Training for Designing & Comparing Equivalent Concrete & Asphalt Pavements for Parking Lots



- Have you ever been dazed about how to design and compare asphalt & concrete pavement/ parking lot designs?
- Do you need help figuring out the life cycle cost for concrete and asphalt parking lots?
- Ever wonder what the estimated maintenance costs are for either concrete or asphalt parking lots?
- Industry Design Resources on the CD disc, including CAD drawings of Standard Design Details, ACI 330 Quick Reference Guide for Concrete Parking Lots and more

Seminar Description:

Concrete Pavement Analyst (CPA) software is a flexible, market-specific and comprehensive design and promotion tool. Using ACI and the Asphalt Institute recommendations, CPA compares total parking lot ownership costs, giving specifiers and owners the information they need to make sound parking lot pavement decisions. The seminar explains how the software works along with strategies for making effective use of this outstanding tool.

Program Elements Include:

- In-depth explanation of the differences between concrete and asphalt parking areas, including design, construction and maintenance requirements.
- Step-by-step instruction of how to use CPA to produce detailed life-cycle cost comparisons of concrete and equivalent asphalt pavement designs.
- Strategies for utilizing CPA software and customizing it to your specific input parameters
- Local customizing tips for the software.

Reservations include Lunch and Software, \$20.00 per person.

Click Here to register online.

Class limited to the first 25 participants.

Cancellations must be accepted by April 14, 2014

Substitutions can be made at anytime.

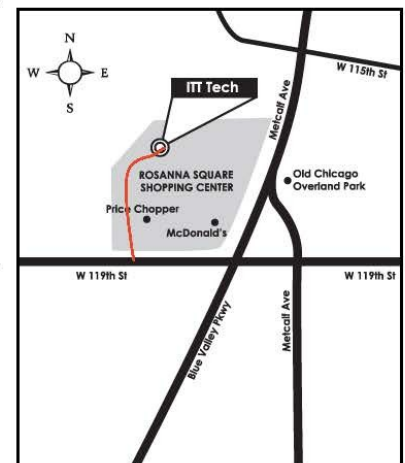
Name: _____

Company: _____

Phone: _____

Email: _____

Fax to 913-381-4958 or email to
 Cindy@concretepromotion.com
 www.concretepromotion.com





2014 Pervious Concrete Technician Re-Certification

Pervious Concrete Technician Certification must be renewed every five years.

This will keep you up-to-date with new technology and new procedures for durable sustainable pervious pavements.

Your certification certificate and your wallet card you received after completing your original certification has your expiration date on them. If you have lost them or need a new one, please call the CPG office at 913-341-5800 to be issues a replacement certificate and/or card.

You may attend an actual technician certification class/field placement again to re-new your certification at the full certification price. Or you may read the updated [Specifiers Guide to Pervious Concrete in Kansas City](#) and the companion document [Handbook to Pervious Concrete in Kansas City](#) and retake the written exam for the reduced re-certification price. (find them both at www.concretepromotion.com)



- **April 16, 2014, 9 am to approx. 3 pm**
Pervious Concrete Technician Certification, Class, Exam, Field Placement
Held at the Geiger Olathe Plant, [Click Here](#) to register for this event.
- **April 24, 2014, 1 pm to approx. 2 pm**
Pervious Concrete Re-Certification
CPG Office, Conference Room, CPG Members \$50, Non-Member \$100
- **Fall TBA, 9 am to approx. 3 pm**
Pervious Concrete Technician Certification, Class, Exam, Field Placement
- **Sept. 4, 2014, 1 pm to approx. 2 pm**
Pervious Concrete Re-Certification
CPG Office, Conference Room. CPG Members \$50, Non-Members \$100

If the re-certification dates above do not work with your schedule, you may contact Christy Martin and set up a specific time to come in to take your written exam. Companies with 5 or more needing re-certification can schedule the written exam to be done at your business location.

Date of Re-Certification:

Name(s):

Company:

Email:

Phone:

Payment: \$



10707 Barkley
Suite A
Overland Park, KS 66211
913-341-5800 ph
913-391-4958 fx
cindy@concretepromotion.com
www.concretepromotion.com

CHAPTER LEADERSHIP

KC APWA 2014 OFFICERS

President - Wayne Gudenkauf
Vice President - Tim Ross
Secretary - Bill Stogsdill
Treasurer - Rob Krewson
Past President - Bob Miller
Director (2nd Year) - Pam Fortun
Director (2nd Year) - Jason Meyers
Director (1st Year) - Dan Brown
Director (1st Year) - Shannon Jeffries
Director-At-Large - Robert Kluender
Delegate - Joe Johnson
Alternate Delegate - Steve Hansen

The APWA Pub News, a free publication of the Kansas City Metro Chapter of the American Public Works Association (APWA), is published in six issues throughout the year. To receive a free subscription, send an e-mail to cmorgan@hntb.com with "Beam Me Up!" in the subject line.

Publisher: Kansas City Metro Chapter of APWA
Editor: Shannon Jeffries
Staff: Tim Morgan

INTERESTED IN WRITING FOR THE APWA PUB NEWS?

The Pub News staff welcomes announcements, news articles, photos and suggestions. A new issue will be published in March. The deadline for the next issue will be Friday, April 25th, 2014. Deadlines will be strictly enforced. Electronic formats are preferred, but not required. Send your stories to Shannon Jeffries at shannon.jeffries@cityofks.net.

POLICY FOR THE USE OF THE APWA PUB NEWS, WEBSITE AND ELECTRONIC MAILING LIST

It shall be the policy of the KC Metro Chapter that the use of the "APWA Pub News, Website and Electronic Mailing List" by outside agencies shall abide by the following:

- Outside agencies, educational institutions, and not-for-profit organizations may utilize the Chapter's website for dissemination of approved items that are considered beneficial to our membership.
- Approval of these items may be granted by the Chapter President, the Newsletter Editor and the Website Committee. When requested, announcements from other organizations may be posted on the Chapter's website under "News" if the Newsletter/Communications Committee is provided electronic announcements in a format that can be posted without modification or editing.
- The Newsletter/Communications Committee may use the chapter's electronic mailing list for announcements to KC Metro Chapter members when the topic is related to an APWA activity or event. However, an announcement will not be sent before the Chapter event has been posted on the KC Metro Chapter website.

This policy was approved by the Executive Committee on November 19, 2008.

APWA 2014 COMMITTEE CHAIRS

Audit & Budget - Alysen Abel
Awards - Melissa Prenger
By-Laws/MDC Symposium/Nominating/Past Presidents - Bob Miller
Chapter Meetings - Rob Kline
Communications and Publicity - Tim Morgan
Community Service - Shawn Graff
Diversity - Rebecca Bilderback
Education & Training - Todd Thalmann
Emergency Management & Homeland Security (PET) - Scott Ward
Emerging Leaders - Nathan Hladky
Engineering & Technology - Michael Haake
Facilities & Grounds - John Skubal
Fleet Services - Howard Mann
Golf Tournament - Cory Clark
Governmental Affairs - Joab Ortiz
Historical - Ernie Longoria
Holiday Party - Julie McNiff
K-12 Student Outreach - David Smalling
Leadership & Management - Eric Strack
Membership - Matt Spencer
Membership BBQ & Steak Fry - Bob Rolle
Mid-America Conference - Steve Schmidt
Mo-Kan Street Superintendent - Robert Kluender
Myron D. Calkins Scholarship - Shannon Jeffries
National Public Works Week - Dan Brown
Snow & Equipment Training Expo - Chris Porras
Standards & Specifications - Dena Mezger
Student Chapter - Phil Herrman
Sustainable Infrastructure - Ann Schroer
Transportation - Jim Wingert
Utility & Public Right-of-Way - Ted Ingalls
Water Resources Management - Chad Johnson

Appointments, Liaisons, and Coordinators

ACEC-APWA Liaison - Mary Jaeger
Calendar/Events Coordinator - Margie Fisher
International Affairs - Larry Frevert
Joint Engineers Council - Jim Foil
MCIB/KCMMB - Todd LaTorella

For contact information, visit: <http://kcapwa.net>