

AMERICAN PUBLIC WORKS ASSOCIATION



# PUB NEWS

Volume 40 Number 4

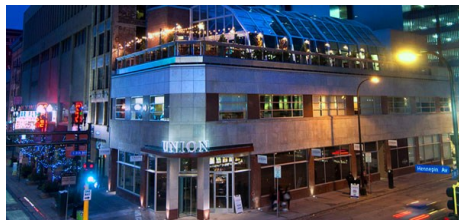
July 2016

## IN THIS ISSUE

### WHAT'S INSIDE

President's Perspective..... 2  
 Delegate Details..... 2  
 Techno Minute ..... 4  
 Recent Events..... 6  
 Upcoming Events..... 8  
 Committee Announcements...15  
 Other Announcements ..... 16  
 Chapter Leadership..... 17

**KC Metro Golf Tournament**  
 Tuesday, September 20  
 Prairie Highlands Golf Club  
**See page 10 & 11 for details.**



**KC Metro Dinner at Congress**  
 Tuesday, August 30  
 UNION Restaurant, Minneapolis, MN

**See page 12 for details.**

### 2015 PACE AWARD RECIPIENT

**19 YEARS IN A ROW!**

**Debris Management Planning Course**  
 November 8-10  
 Olathe Fire Department

**See page 13 for details.**



**KC Metro APWA is social! Like us on Facebook!**

**See page 16 for details.**

## 2016 ANNUAL PARTNERS

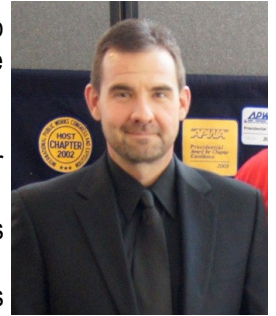
**Garver  
 HDR  
 TranSystems  
 Terracon  
 City of Leawood  
 Walter P. Moore  
 TREKK Design**

**HNTB  
 Shafer Kline & Warren  
 Burns & McDonnell  
 GBA  
 Affinis  
 HG Consult  
 BHC Rhodes**

# PRESIDENT'S PERSPECTIVE

FROM BILL STOGSDILL

I think I am still full from the APWA BBQ last month.... Lots of great food and good times. Congratulations to Rick Walker and the CFS BBQ team for winning the overall Grand Championship. This year's BBQ was the largest that I can remember with several new faces.



The 2018 PWX Steering Committee is continuing to fill Committee Chair positions but are still looking for additional volunteers to chair key committees. Specifically the following committees:

- Speaker Gifts- Speakers (approximately 300 speakers) receive a small gift from the local Kansas City Metro Chapter's Host Committee in appreciation of their participation in PWX.
- Local Chapter Hospitality- The hospitality area typically has comfortable seating, light snacks and beverages and small local give-a-ways.
- Exhibit Opening Entertainment- Arrange and fund a local band or group of entertainers to lead PWX attendees from the Opening General Session to the Exhibit Hall.

If you or someone you know would be interested in chairing one of these committees please let myself, [Joe Johnson](#) or [Tim Ross](#) know. If you would just like to volunteer our database is still available for sign up at <http://signup.knod.us/apwapwx/>.

Speaking of PWX, the 2016 PWX is right around the corner, are you going? I am expecting a lot of fellow KC Metro Chapter members to make the trip to Minneapolis at the end of August. If you have the opportunity to attend a PWX I would encourage you to not pass it up. It is a four day, full court press of training, great networking opportunities and the largest equipment expo in Public Works. There are training opportunities for everyone from temporary summer helpers to the most senior of management. There is still time to sign up and I hope to see you there.

Do you have an up and comer in your organization? Are you an up and comer in your organization? Perhaps the Emerging Leaders Academy is for you.

The Emerging Leaders Academy is a yearlong program through APWA with a class retreat in October in KC and culminates with a class presentation at PWX. Currently in its 9th year, this program has had a representative from the KC Metro Chapter in each class and this year it could be you!

APWA hosts an informational conference call in July and then applications are usually due in August. The page at APWA National has not been updated to include the 2016-2017 information at the writing of this article but here is the link <https://www.apwa.net/learn/Emerging-Leaders-Academy>.

If selected for the class you must attend PWX to graduate. To help offset the cost to your employer the KC Metro Chapter annually budgets a stipend for each KC Metro Chapter member (that is selected) to attend.

Thanks again for all that you do!

## DELEGATE DETAILS

FROM JOE JOHNSON

As many of you know the KC Metro Chapter was selected to host the 2018 National Congress or what is now called PWX. The Steering Committee is working to fill all the committee chair positions by the end of the summer. Past National Events requires Chapters to have 300 to 400 volunteers to support the committees needed for PWX. We will have assistance from our neighboring Chapters with volunteers but the Metro Chapter has always provided the bulk of the volunteers. Once we complete the committee chairs and update the volunteer website, notices will be sent to sign up for the committee you want to help with.



The Steering Committee and the Fundraising Committee are working to finalize our fundraising campaign for PWX. We anticipate sending letters out later this year. The Chapter is looking forward to partnering with all of its private firm members and local municipalities.

*Continued on page 3*

## Delegate Details—cont. from page 2

As we move into July voting will be open for National Board Members and President-Elect. Each year on-line voting turn out is very disappointing compared to the number of members in the Chapter. **Notices will be coming soon to vote, I encourage everyone to take time to vote.**

As many of you know PWX is right around the corner with this year being in Minneapolis, Minn. from August 27-31. At this time, number of registered attendees is the best it has ever been. So don't wait any longer to register.

I will be attending PWX this year as the Council of Chapters completes its 2nd year. Work continues with several committees and the results of their work will soon be made available to everyone. The Steering Committee continues to work with the National Board and the Technical Committees to identify topics the Council of Chapters can review and provide input on. If you have a concerns or topics you feel this group needs to address please let me know. Have a great summer.

For those interested in what some of the national committees are working on and would like to get involved here is what is happening:

### Emergency Management Committee

The Emergency Management Committee is carefully reviewing the revised National Incident Management System document to be certain public works will not be adversely affected by the proposed changes. The committee has also finalized the concept for their May 19, 2016, Click, Listen and Learn (CLL) program, Social Media and Public Works: Lessons Learned From Real World Applications. To register or for details go to <http://www2.apwa.net/events/eventdetail.asp?ID=9546>.

### Engineering and Technology

The Engineering and Technology Committee is working on articles for the *APWA Reporter*, including one entitled *Drones as a Tool for Bridge Inspection*. The authors of that article are scheduled to present a session on drones at PWX in Minneapolis also.

### Facilities and Grounds Committee

The Facilities and Grounds Committee is requesting input from APWA members on stormwater and urban forestry in response to a request from the Sustainable Urban Forest Coalition.

### Fleet Services Committee

Members of the Fleet Services Committee are reviewing and updating content for the Fleet Management Manual. Members will identify missing or outdated material and may be calling for additional volunteers to assist in the process. Anyone interested should contact staff liaison Teresa Hon ([thon@apwa.net](mailto:thon@apwa.net)). The committee encourages members to check the [Members Library](#) where they can find a recording of last month's Fleet Committee-sponsored webinar, Filling Fleet Manager Vacancies and Tools to Prepare for the Position.

### Leadership and Management Committee

The Leadership and Management Committee held its first joint quarterly call with the LM Knowledge Team on April 21, 2016. The LM Knowledge Team was created to expand volunteer opportunities to those who may be interested in contributing to the National Leadership and Management Committee. Knowledge Team members will have a unique opportunity to share their input with the Leadership and Management Committee and have a primary role in shaping the future of APWA and public works leaders.

The Leadership and Management Committee is in the process of revising Public Works Administration (also known as APWA's Blue Book). The committee is currently reaching out to other technical committees to assist with updating the public works operations chapter.

### Transportation

APWA Transportation Technical Committee (TransCom) members were pleased to receive 748 responses from APWA transportation -focused members to a survey sent out earlier this year. A few highlights included Topics of Importance and Primary Mode for Receiving Information. Based on the results, the top five areas of importance included: Safety, State and Local Funding, Maintenance, Design, and Construction. The survey indicated the primary mode of receiving information comes from: Industry Publications (39%), Conferences (31%), web-based sources (11%), LTAP (9%), and Webinars (9%). Other important takeaways from the survey will be posted soon on APWA Connect in the *Transportation InfoNOW* Community.

## Delegate Details—cont. from page 3

### UPROW

UPROW member Al Field attended the CGA Conference in Las Vegas March 8-10, 2016 and with AZ811 Executive Director Sandy Holmes presented *Abandoned Utilities: Out of Sight, Out of Mind?* to a standing room only audience. The presentation will be made again at PWX.

### Water Resources Management

Anticipating an eventual modernization of the Clean Water Act, the Water Resources Management Committee is identifying the major themes that need addressing from the public works perspective, for example, affordability, permitting issues, jurisdictional concerns, etc.

## TECHNO MINUTE

FROM DANNY COLTRANE

### Avoid Getting Tapped Out: Pricing Strategies to Ensure Clean, Safe Water Continues to Flow

*Shafer, Kline & Warren's Danny Coltrane offers insight into how planning and maintaining clean water systems are essential to the health and safety of communities.*

People take water for granted. Every day, when the tap is turned on to fill a glass, take a shower or water a lawn, water is there. Water could be considered the original on-demand service. But this attitude can be dangerous, and Danny Coltrane is passionate about changing it.



Unlike other on-demand services like an instant movie download, water is not a luxury expense. It is necessary for living a safe and healthy lifestyle. In a time when cities, such as Flint, Michigan, are facing the unthinkable reality of unsafe or dry taps, Coltrane's message to community officials who say they can't afford to fix their community's water problems is simple: They can't afford not to.

As managing director of Shafer, Kline & Warren (SKW) Water Resources South Region, Coltrane specializes in the effective treatment and distribution of water and wastewater. He has studied growth patterns, investigated system facilities and produced comprehensive planning documents to ensure communities are prepared to operate and maintain their water resources for years to come.

"There are some places that brag that they haven't raised rates in 20 years, and the residents think that is a good thing," said Coltrane. "To me, that's sad. They have done nothing to control their future and have only postponed the inevitable cost of replacement to the next generation."

Coltrane advises that by understanding the life span of water systems, developing a comprehensive maintenance program, planning for reasonable rate increases and maximizing funds, communities can ensure clean water is available now and in the future.

"When you sign on to be a city commissioner or official, you are there to watch out for the public's health and safety," said Coltrane. "The delivery of clean, safe water is an essential component of that."

One of the underlying assumptions that Coltrane confronts as a consulting engineer is that utilities have a 100-year life expectancy. He clarifies that while a system might have this lifespan, there are parts of that system that have a 20-year lifespan.

"Many of the water districts that came into existence in the 1960s use products that are inferior to today's products," said Coltrane. "They are coming to the end of their life expectancy and need to be inspected, repaired or replaced."

Continued on page 5



## Techno Minute—cont. from page 4

One of the dangers of not planning and maintaining these systems is that the operations and maintenance costs of the system could exceed the service's worth. However, by creating a plan that matches the life span of the system, municipalities can ensure they are able to replace system components as needed.

"If you have a 100-year lifespan on 100 miles of pipe, a very simple plan is to replace one mile of pipe per year," said Coltrane. "What can happen is that people try to save money by replacing a half mile at a time, but then the replacement plan is twice the life expectancy of the pipe."

Each year, cost of living adjustments reflect the corresponding inflation. Many of the small towns and rural water districts initially built their systems on grant funds, but without those same start-up grants available, the communities need to account for replacing systems at full price.

"By raising water rates with the cost of living, municipalities can sufficiently support their operating costs and effectively maintain their system without a sudden raise of 50 percent or more to account for a budget shortfall," asked Coltrane.

Understanding the integrity of facilities and systems is the foundation for developing a planning document for the municipality. Coltrane advises performing a root cause analysis and developing a comprehensive plan is essential for maintaining water systems.

"Do not plan for the water system and ignore the tank," said Coltrane. "Take a complete view of the entire system as well as population trends, regulations and risk factors."

One of the benefits of the comprehensive planning and incremental rate increases that reflect the cost of living is that these steps allow cities to maximize the efficiency of their funds.

"Once they have done the work on planning, cities and districts can watch economic and material trends during implementation," said Coltrane. "In one case, we were saving 10-25 percent on materials off the standard bid process."

"Our culture is such that we want everything now, and it can be hard to think about the future. But we can't take water for granted. By changing the way we think about water, we can sustain our quality of life and preserve this standard of living for our children and grandchildren. That's something worth investing in," added Coltrane.

About SKW:

Communities begin at Shafer, Kline & Warren (SKW). Since 1950, our surveying, engineering and construction services have helped clients make everyday life better, easier and safer. Our expertise provides comprehensive solutions for energy and infrastructure in communities large and small. Learn more at [skw-inc.com](http://skw-inc.com).



## 2015-2016 Myron D. Calkins Scholarship Recipients

From left to right are Jose Leon, Alysén Abel, Bradley Glass, Logan Bannister, Charles Love, and Brandon Keller. Recipients not in attendance (or in the pic) were Alexandra Corcoran and Bryce Coulter.

# RECENT EVENTS

## 2016 KC Metro Chapter National Public Works Week Awards Luncheon Celebration

~ KC Metro Chapter Award Winners ~

### PROFESSIONAL AWARDS

#### Young Leader Award

*Tim Morgan, HNTB*

### PUBLIC WORKS PROJECT OF THE YEAR AWARDS

#### Transportation - Less Than \$5M

Markey Parkway and Towne Center Drive - Belton, MO

*Managing Agency - City of Belton, MO*

*Primary Consultant - Olsson Associates*

*Primary Contractor - Phillips Hardy, Inc.*

#### Transportation - \$5M to \$25M

Johnson Drive, Lamar to Nall - Mission, KS

*Managing Agency - City of Mission, KS*

*Primary Consultant - Olsson Associates*

*Primary Contractor - VF Anderson Builders, LLC*

#### Structures - Less Than \$5M

2nd Avenue and Limit Street - Leavenworth, KS

*Managing Agency - City of Leavenworth, KS*

*Primary Consultant - TranSystems*

*Primary Contractor - Linaweaver Construction, Inc.*

#### Structures - \$5M to \$25M

Eastern Jackson County Courthouse - Independence, MO

*Managing Agencies - Jackson County, MO*

*Primary Consultant - Burns & McDonnell*

*Primary Contractor - Excel Constructors*

#### Environment - Less Than \$5M

Indian Creek Channel - Olathe, KS

*Managing Agency - City of Olathe, KS*

*Primary Consultant - Phelps Engineering, Inc.*

*Primary Contractor - VF Anderson Builders, LLC*

#### Disaster or Emergency Construction/Repair - Less Than \$5M

55th Street Improvements— Kansas City, KS

*Managing Agency - Unified Government of Wyandotte CO & KCK*

*Primary Consultant - TranSystems*

*Primary Contractor - Gunter Construction Company*

#### MANAGEMENT INNOVATION AWARD

City of Belton—Cost Share Program for Sidewalks/Driveways/Culverts

~ National Award Winners ~

#### Top Ten Public Works Leader of the Year Award

*Dena Mezger, City of Lee's Summit, MO*

Picture: Dena Mezger, Top Ten Public Works Leader with previous Top Ten Public Works Leaders Larry Frevert, Doug Wesselschmidt, and Joe Johnson



## Government Affairs Committee Luncheon—June 8, 2016



On June 8<sup>th</sup>, the Government Affairs Committee hosted Kansas Department of Transportation Secretary Mike King at the Matt Ross Community Center where he spoke to the Kansas City Metro Chapter. We had 42 attendees there, eager to hear his update on the state of KDOT through a very informative Q&A session. As always, Secretary Mike King did a fantastic job of representing KDOT and speaking to the matters of the APWA organization. Special thanks to John Skubal and Kasey Randle-Biehler for putting this together.



## 12th Annual BBQ Challenge and Membership Drive



The 12<sup>th</sup> Annual APWA BBQ challenge was held on June 10, 2016 at the Knights of Columbus Park in Shawnee, KS. The contest was hot and steamy for early June, and I'm not just talking about the delicious BBQ! Many thanks to our corporate event sponsors and to the fourteen BBQ teams that competed in this year's contest!

As usual, the majority of the BBQ judges were Past Presidents from the KC Metro chapter. The participating teams were judged in the categories of sausage, chicken, ribs, and pork. This year's Grand Champions for the contest, and the recipients of the traveling BBQ Champions' trophy, was CFS BBQ Team (CFS Engineers). The CFS BBQ team won for the first time in the APWA

BBQ contest! Grease Monkey (City of Olathe) earned the Reserve Grand Championship trophy, while there was a tie for third place between Affinis Swine Dining (Affinis Corporation) and Up in Smoke (City of Olathe).

Other participating teams included: Second Hand Smoke (City of Olathe), Seriously Smokin' (Burns & McDonnell), Beats Workin' (TranSystems), Meats Workin' (TranSystems), Genuswine Brisket Authority (GBA), Dunn Up BBQ (City of Leawood), Rub Me Tender (City of Shawnee), Terra Bull BBQ (Terracon), Rib Busters (Jackson County Public Works), and Blazing Cattles BBQ (Walter P. Moore).

Corporate sponsors for this year's event were: Affinis, TranSystems, HDR, HNTB, TREKK Design Group, City of Leawood, GBA, Garver, HG Consult, Terracon, Shafer Kline & Warren, Burns & McDonnell, Walter P. Moore, and BHC Rhodes.



Dinner was served to approximately 175 people following the contest barbeque judging. Congratulations and Thank You to the APWA BBQ Committee for organizing another great event! See [kcmetro.apwa.net](http://kcmetro.apwa.net) for photos from this year's contest.



Grand Champion – CFS BBQ team sponsored by CFS Engineers



Reserve Grand Champion – Grease Monkey Team sponsored by City of Olathe

**UPCOMING EVENTS**

# Royals

**FRIDAY  
JUNE 24**  
TAILGATE (LOT N) 4:30  
(\$15) GAME 7:15

**ASCE**  
AMERICAN SOCIETY OF CIVIL ENGINEERS

PARTNERING WITH

**YP**  
ADWA  
YOUNG PROFESSIONALS

**AND OUR  
TAILGATE SPONSOR**

**BHC RHODES**  
Civil Engineering Surveying Utilities

**CONSTANT CONTACT SIGN UP DEADLINE FRIDAY MAY 27**  
contact [tyler.justin.garrett@gmail.com](mailto:tyler.justin.garrett@gmail.com)

Save the date!  
**2016 Holiday Party and  
Chapter Meeting**

Tuesday, December 13, 2016  
Grand Street Café  
4740 Grand Avenue  
Kansas City, MO  
5:30– 9:00PM





THE GOLFERS ASSOCIATION OF MISSOURI  
**APWA**  
Kansas City Metro Chapter



# GOLF TOURNAMENT

35<sup>th</sup> ANNUAL

**SIGN UP**

**PRAIRIE HIGHLANDS**  
14695 S INVERNESS ROAD, OLATHE, KS

# 09.20.2016

CALL FOR MORE INFO // 913.577.8840

**HEIDI THUMMEL**  
[HTHUMMEL@GBATEAM.COM](mailto:HTHUMMEL@GBATEAM.COM)

Notes



# 2016 KC Metro Chapter Golf Tournament Tuesday, September 20, 2016

Prairie Highlands Golf Club, 14695 S Inverness Street, Olathe, KS 66061  
 7:30 Breakfast/Registration, 8:30 a.m. Shotgun Start, Buffet Lunch & Awards Following



The 2016 golf committee has been hard at work, making plans for a fantastic client entertainment and networking event! We have received wonderful support from chapter sponsors and the tournament is almost sold out!

### Special thanks to the following sponsors as of 06/30/16

Tournament Sponsor



Player Gift Sponsor



Lunch Sponsors



Breakfast Sponsor

WALTER P MOORE

Print Sponsor



Beverage Cart Sponsors



Hole Sponsors



TO SPONSOR THE EVENT, SEE NEXT PAGE AND CONTACT HEIDI THUMMEL.

Vendors and sponsors wanting to donate door prices, please deliver apparel, tickets, golf stuff, etc. to Therese Mersmann (City of Olathe) or Jason Hanson (City of Raytown).



# 2016 KC Metro Chapter Golf Tournament Tuesday, September 20, 2016

Prairie Highlands Golf Club, 14695 S Inverness Street, Olathe, KS 66061  
 7:30 Breakfast/Registration, 8:30 a.m. Shotgun Start, Buffet Lunch & Awards Following Golf



Indicate your level of sponsorship and mail with your check *payable to KC Metro APWA* to:

GBA  
 Attn: Heidi Thummel/APWA  
 9801 Renner Blvd  
 Lenexa, KS 66219-9745

Sponsorship Level	Amount	Company Name
Tournament Sponsor	\$1,250	<b>GBA</b>
Player Gift Sponsor	\$1,000	
Breakfast Sponsor	\$750	Walter P Moore, <b>1 available</b>
Bloody Mary / Baileys & Coffee Sponsor	In-Kind	Corrective Asphalt Materials
Lunch Sponsors	\$750	TREKK, SKW, <b>2 available</b>
Beverage Cart Sponsor	\$500	BHC & Corrective Asphalt Materials
Hole Sponsor w/Foursome	\$525	<b>8 available</b>
Golf Foursome Only	\$450	
Individual Golf Only	\$125	_____

Contact Name: \_\_\_\_\_

Phone Number: \_\_\_\_\_

E-mail: \_\_\_\_\_

*Receipt of payment confirms your sponsorship.*

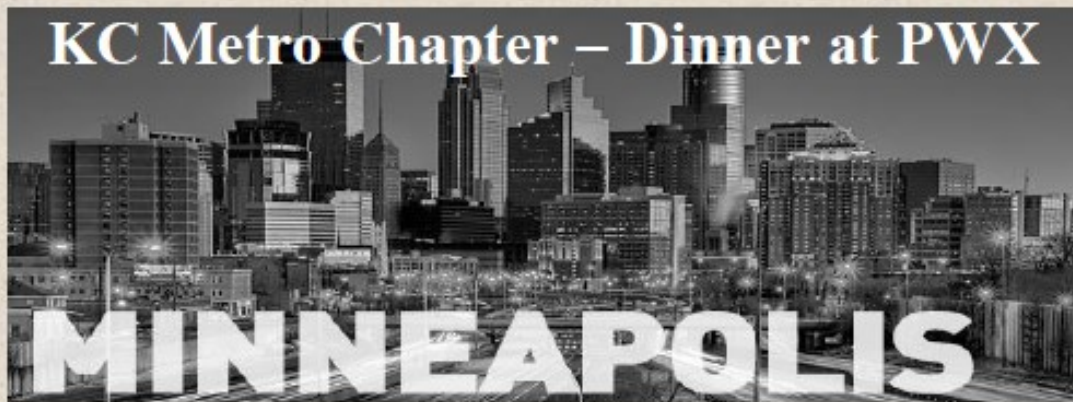
*If you have questions, please contact Heidi Thummel, 913-577-8840, [hthummel@gbateam.com](mailto:hthummel@gbateam.com).*

**Player Names** – Please provide player names with organization/company. Indicate all known at this time. Full player rosters will be confirmed the week of September 10.

\_\_\_\_\_

\_\_\_\_\_





Tuesday, August 30, 2016 -- 7:00 – 9:30

UNION Restaurant ([731 Hennepin Avenue, Minneapolis, MN](https://www.unionrestaurant.com/))

Private Rooftop Patio Dining Area

Open Air or Glass Enclosed depending on Weather

Dinner Menu: TBD (more information to follow)

Cost: \$50.00

**PUBLIC WORKS EXPO**

Register: online at [KCMetro.APWA.net](http://KCMetro.APWA.net) under “Upcoming Events” or by check payable to **KC Metro Chapter APWA**; send checks to:

Rob Krewson | HDR Engineering | 4435 Main Street, Suite 1000 | Kansas City, MO 64111

Please contact Rob Krewson at [Rob.Krewson@hdrinc.com](mailto:Rob.Krewson@hdrinc.com) or 816.206.3545 for more information or if you have any special dietary requests or access needs.

# Kansas Division of Emergency Management Training

Register online at <https://ks.train.org> • Search for Course ID: 1059561

## G202—Debris Management Planning Course for State, Tribal, and Local Officials

November 8-10, 2016 • 8am to 5pm each day  
Olathe Fire Department • 1225 S. Hamilton Circle, Olathe, KS

FEMA, as well as State, Tribal, and local governments, have become increasingly aware of the importance of providing clear and consistent guidance to communities on debris planning, response and recovery issues, and of FEMA eligibility and process requirements of debris removal activities. The cost of debris removal continues to rise, conflicts have arisen with community's methods of contracting for and monitoring debris removal operations and methods of disposal are often found not to comply with environmental laws and regulations. As a result, Public Assistance applicants are often not receiving the full PA funding for which they would otherwise be eligible.

FEMA recognizes that effective planning and management of debris issues require extensive training and experience. As a result, this course is designed to provide our State, Tribal, and local partners, training that is nationally sponsored. The goal of the course is to enable State, Tribal, and local government officials to successfully plan for, respond to, and recover from a major debris-generating event.

### Course Objectives

- Apply knowledge of planning for, implementing and managing debris activities, including issues associated with environmental and historic preservation considerations, debris forecasting and estimating, debris contracting, Debris Management Site evaluation, operation, and debris monitoring
- Apply knowledge of FEMA eligibility and reasonable costs criteria as pertinent to presidentially declared events
- Address debris planning and response and recovery activity issues.

### Target Audience

This course is designed for State, Tribal, and local officials who are responsible for planning, managing, and/or implementing debris removal and disposal activities from all types of disasters.

**The deadline to register is November 1, 2016. Lodging arrangements or reimbursements will not be offered by KDEM for this particular session.**

Visit our website for a full listing of courses available in Kansas <http://www.kansastag.gov/KDEM.asp?PageID=266>

### Need help?

Isabel Herrera Schultes at [maria.i.herrera13.nfg@mail.mil](mailto:maria.i.herrera13.nfg@mail.mil) (785) 274-1412 OR KS-TRAIN Help Desk [helpdesk@kdheks.gov](mailto:helpdesk@kdheks.gov) (785) 296-5655

# Save the Date!

## 2016 Mid-America Snow and Equipment Expo APWA

October 3-7, 2016

It's time for the annual 2016 Mid- America APWA Snow and Equipment Expo! Employees and leaders from all across the metro area are welcome to participate in an event designed around training, education, and a bit of spirited competition. This year's offerings include Flagger Training Certification, CDL Skills, Snow Fighter and Technician Troubleshooting During the Storm, and Weather Safety along with outstanding competitions (which can be found on the attached registration form).



### Register Now!

Questions? Contact Chris Porras at [cporras@cityofshawnee.org](mailto:cporras@cityofshawnee.org) or visit our website at [www.midamericasnowrodeo.com](http://www.midamericasnowrodeo.com)



Flyers will be mailed out by the end of July!

## NEW MEMBERS

Jeffery Anderson, Unified Government

Steve Bialek, City of Shawnee

Heather Bray, City of Kansas City, MO

Mark Chinery, Foterra Pipe and Precast

Judd Claussen, Phelps Engineering

Tom Dyche, City of Shawnee

April Jackson, Lamp Rynerson & Associates

Marilyn Reiley, City of Kansas City, MO

Autumn Schleicher, Lamp Rynerson & Associates

Hallie Sheptor, City of Olathe

Alan Shorthouse, City of Olathe

Joshua Tinkey, TREKK Design Group

Erik Troy, Terracon Consulting, Inc.

Beth Wright, City of Olathe



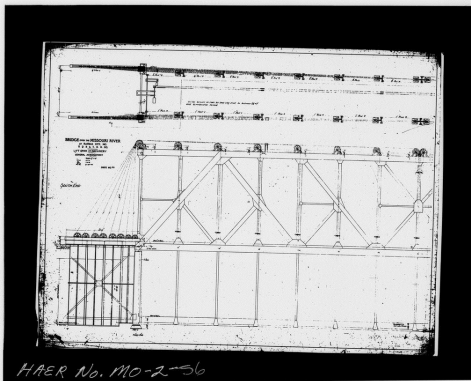
# COMMITTEE ANNOUNCEMENTS

## The Armour-Swift-Burlington (ASB) Bridge—from Ernie Longoria

Kansas City is home to two nationally recognized historic civil engineering landmarks. One is the Kansas City Parks and Boulevard System. The other is the Armour-Swift-Burlington Bridge. The bridge is significant in that it is a two-decked bridge where the lower deck can be raised to allow boat traffic pass underneath on the Missouri River while the upper deck remains in operation.

Named for Amour Packing Company, Swift & Company, and the Chicago, Burlington, and Quincy Railroads (now named Burlington Northern Railroad), bridge construction started in 1890, but work stalled due to lack of funding. It was completed in 1912 and carried vehicular traffic on the upper deck and railroad traffic on the lower deck. Over time, the bridge went from being a toll bridge to being 'free'. At one time it carried electric streetcars and survived the 1951 Flood. The bridge carried vehicular traffic until 1987, when the Heart of America bridge was opened. Today, although it only carries railroad traffic, its design is unique enough to draw bridge enthusiasts and earned its own wikipedia page.

This past May, the Kansas City Section of the American Society of Civil Engineers held a ribbon cutting ceremony dedicating a plaque and interpretive Kiosk. The ASB Kiosk consists of a series of columns in the shape of the bridge's counterweights that describe the history of the bridge, its construction, and its impact to the local community. The ASB Kiosk is on the grounds of the Kansas City Port Authority, but is open to the public and accessible from Berkley River Front Park. The bridge then:



Continued on page 16

## The Armour-Swift-Burlington (ASB) Bridge—Cont. from page 15

The bridge now:



### References

ASB Bridge, Wikipedia, [https://en.wikipedia.org/wiki/ASB\\_Bridge](https://en.wikipedia.org/wiki/ASB_Bridge)

Library of Congress, Prints & Photographs Online Catalog (PPOC), Armour Swift Burlington Bridge Kansas City, <http://www.loc.gov/pictures/item/mo0450/>

Kansas City ASCE, <http://www.kcengineers.org/history/>

Berkley Riverfront Park, <http://berkleyriverfrontparkkc.com/>

## OTHER ANNOUNCEMENTS

### Like KC Metro Chapter APWA on Facebook

To receive the most up to date information about recent and upcoming events and network with other KC Metro Chapter APWA members, like us on Facebook! Just login and search for “KC Metro Chapter APWA”!



### Open Positions

[City of Edwardsville—Public Works Director](#)

[Crawford, Murphy & Tilly, Inc \(Springfield, MO\) - Water Resources Engineer](#)



# CHAPTER LEADERSHIP

## KC APWA 2016 OFFICERS

President - Bill Stogsdill  
Vice President - Rob Krewson  
Secretary - Jason Meyers  
Treasurer - Dan Brown  
Past President - Tim Ross  
Director (2<sup>nd</sup> Year) - Cory Clark  
Director (2<sup>nd</sup> Year) - Shawn Graff  
Director (1<sup>st</sup> Year) - Kyle Diekmann  
Director (1<sup>st</sup> Year) - Tim Morgan  
Director-At-Large - Robert Kluender  
Delegate - Joe Johnson

The APWA Pub News, a free publication of the Kansas City Metro Chapter of the American Public Works Association (APWA), is published in six issues throughout the year. To receive a free subscription, send an e-mail to [cgard@cityofshawnee.org](mailto:cgard@cityofshawnee.org) with "Beam Me Up!" in the subject line.

Publisher: Kansas City Metro Chapter of APWA  
Editor: Caitlin Gard  
Staff: Bill Stogsdill

### INTERESTED IN WRITING FOR THE APWA PUB NEWS?

The Pub News staff welcomes announcements, news articles, photos and suggestions. A new issue will be published in March. The deadline for the next issue will be Friday, August 26, 2016. Deadlines will be strictly enforced. Electronic formats are preferred, but not required. Send your stories to Caitlin Gard via email to [cgard@cityofshawnee.org](mailto:cgard@cityofshawnee.org).

### POLICY FOR THE USE OF THE APWA PUB NEWS, WEBSITE AND ELECTRONIC MAILING LIST

It shall be the policy of the KC Metro Chapter that the use of the "APWA Pub News, Website and Electronic Mailing List" by outside agencies shall abide by the following:

- Outside agencies, educational institutions, and not-for-profit organizations may utilize the Chapter's website for dissemination of approved items that are considered beneficial to our membership.
- Approval of these items may be granted by the Chapter President, the Newsletter Editor and the Website Committee. When requested, announcements from other organizations may be posted on the Chapter's website under "News" if the Newsletter/Communications Committee is provided electronic announcements in a format that can be posted without modification or editing.
- The Newsletter/Communications Committee may use the chapter's electronic mailing list for announcements to KC Metro Chapter members when the topic is related to an APWA activity or event. However, an announcement will not be sent before the Chapter event has been posted on the KC Metro Chapter website.

This policy was approved by the Executive Committee on November 19, 2008.

## APWA 2016 COMMITTEE CHAIRS

Audit & Budget - Alysen Abel  
Awards - Tony Meyers and Becky Bonebrake  
By-Laws - Tim Ross  
Chapter Meetings - Joe Burgett  
Communications and Publicity - Caitlin Gard  
Community Service - Shawn Graff  
Diversity - Abdul Yahaya  
Education & Training - S. Joji Calabro  
Emergency Management & Homeland Security (PET) - Scott Ward  
Emerging Leaders - Rob Kline  
Engineering & Technology - Michael Haake  
Facilities & Grounds - Tom Audley  
Fleet Services - Howard Mann  
Golf Tournament - Tawn Nugent  
Governmental Affairs - Travis Levitt & Joab Ortiz  
Historical - Ernie Longoria  
Holiday Party - Julie McNiff  
K-12 Student Outreach - David Smalling  
Leadership & Management - Nick Arena  
Membership - Matt Spencer  
Membership BBQ & Steak Fry - Brian Ladd  
Mo-Kan Public Works Association - Robert Kluender  
Myron D. Calkins Scholarship - Shannon Jeffries & Phil Herrman  
National Public Works Week - Dan Brown  
Nominating Committee - Tim Ross  
Past President Committee - Tim Ross  
Snow & Equipment Training Expo - Chris Porras  
Standards & Specifications - Dena Mezger  
Student Chapter - Aaron Castro & Tim Cope  
Sustainable Infrastructure - Ann Schroer & Brenda Macke  
Transportation - Jaclyn White  
Utility & Public Right-of-Way - John Cooper  
Water Resources Management - Chad Johnson

### Appointments, Liaisons, and Coordinators

ACEC-APWA Liaison - John Skubal  
Calendar/Events Coordinator - Karen Scherer  
Joint Engineers Council - Howard Lubliner  
MCIB/KCMMB - Todd LaTorella  
Solid Waste Management - Lisa McDaniel

*For contact information, visit: <http://kcapwa.net>*