

IN THIS ISSUE

WHAT'S INSIDE

President's Perspective..... 2
 Delegate Details..... 2
 Techno Minute 3
 Recent Events..... 4
 Upcoming Events..... 8
 Committee Announcements...12
 Nominating Committee Letter.17
 New Members.....17
 Other Announcements18
 Chapter Leadership..... 19

KC Metro APWA is now on Facebook! Like us at:
KC Metro Chapter APWA



**2014 PACE
AWARD
RECIPIENT**

**18 YEARS
IN A ROW!**

Save the Date for these Upcoming Events

- * **November 12th**—Safety and Emergency Management Seminar
- * **November 18th**—Transportation Council Quarterly Meeting
- * **November 18th**—November Luncheon - Design-Build I-70 Bridge Project
- * **December 8th**—2015 APWA Holiday Party

Congratulations to our Techno Guru—Mike Ross on his big news!
 Check out page 3 for details!

2015 ANNUAL PARTNERS

**Garver
HDR
TranSystems
Kissick Construction
City of Leawood
Walter P. Moore**

**HNTB
Shafer Kline & Warren
Burns & McDonnell
GBA
EJ Company
CDM Smith
TREKK**

PRESIDENT'S PERSPECTIVE

FROM TIM ROSS

Oh my gosh, it's November and this is my last message of the year! How can that be?

What a pleasure it has been to work more closely with many of you in 2015. You truly have provided great value to the membership and the metro community by focusing on our strategic goals. During this season of thanks, I am so thankful for your commitment to APWA.



In October, we continued our K-12 outreach by participating in the **Olathe 8th Grade Career Expo**. Thanks to those of you that donated your time to help pave the way towards public works careers.

If you haven't already, check out the photos from the **APWA Rodeo and Equipment Expo** on our Facebook page—what a fun and unique event. And some of our PW Directors competed too! It's good to know that plowing is in talented hands with winter coming.

Also in October we conducted our Public Works Institute Module IV **Public Works Leadership Skills** for 56 attendees at Shawnee Town Hall. This sizeable class is an impressive group and 25 of them graduated from the PWI program this year. Congratulations, folks!

For those of you in the public sector, I know it can be harder to find the resources and support that allow you to participate in chapter events. The Chapter wants to know what kind of events fit within your parameters so you can enjoy your membership more. We will be sending many of you a survey that asks what kind of training and networking you value most. We want to know if you can host an event at your facility and present something about your practices that is of interest to our membership. Please keep your eyes out for the short survey and return it without delay. We want to benefit from your input for 2016 events.

Looking ahead, energy is building for the **2018 Public Works Expo in Kansas City**. A core steering committee of chapter members has started talking with APWA National about the basic structure of this large and complicated effort. In 2016 many of you will have a chance to join in the planning and development. The Chapter will need your teamwork to make this a success, and I'm sure it will be.

Wishing you the happiest of holiday seasons!

Tim

DELEGATE DETAILS

FROM JOE JOHNSON

As many of you may already know the Chapter will be hosting the 2018 National Congress now called PWX. As we move forward getting our ducks in a row, we will be reaching out to everyone to volunteer for this important event. The Chapter has partnered with Missouri, Nebraska, Kansas and Iowa to make this one of the best. Thank you in advanced for volunteering to help in this effort.



National has been busy these last couple of months with many new initiatives and updates on some of their key programs. The following updates are just a few of the things National has been working on.

APWA has appointed a seven-member Task Force on Asset Management with the intention of assisting APWA in furthering the efforts of implementing asset management for local governments across North America. The Task Force consists of seven US and Canadian Members.

The Center's first issue of "Sustainable Practices in Public Works" is now available on the Center's website. This resource is a collaborative effort with the Technical Committees. Each technical committee was asked to identify sustainable practices examples within their discipline (transportation, water, fleet, leadership and management, etc.), provide information about the practices and include where and how they are being implemented. <http://www.apwa.net/centerforsustainability>

Continued on Page 3

Delegate Details Cont.

Some current Institute for Sustainable Infrastructure (ISI) statistics:

- Over 3,500 professionals and students in 20 countries are ENV Sustainability Professional (ENV SP) credentialed.
- 8 projects have been Envision verified and another 12 are registered.
- 170 private sector corporate members and nearly 1,000 public sector individual members.
- 54 ISI-approved Envision trainers have delivered 25 workshops training nearly 500 people.
- Approximately 450 infrastructure projects are using Envision

APWA is introducing a Chapter Leaders' 'How-To' Video Library through partnership with Cynthia D'Amour, a recognized expert in association chapter leader development. This video series will offer chapter and branch leaders a monthly installment of a short video presentation addressing key chapter capacity development topics.

The concept is similar to Netflix, in which APWA will allow leaders to download a leadership video via the link below. The video topic will change every month to cover a wide-range of topics applicable to building chapter capacity. The monthly video download will include both "How-To" Intensive Videos, which are typically 12 – 22 minutes long, with supportive tools provided to address the topic and Fast-Answer "How-To" Videos (4-6 minutes long focused on providing quick answers to the topic addressed).

The September video: *"Don't Let Your Leaders Lose Momentum – Finish Your Year Together (Running Time 3:59)"*

For more information on the video series, contact Brian Van Norman, Director of Chapter Relations for APWA, at bvnorman@apwa.net or 1-800-848-2792 (ex. 5260).

At the National Level membership is holding at 28,745. That represents a .33% increase compared to same time last year. At the Chapter level our membership is 776.

It continues to be a pleasure representing the Chapter as your Delegate and I am looking forward to another year. As always if you have any questions about what is happening at the national level please let me know.

Happy Holidays!

TECHNO MINUTE

FROM MIKE ROSS

All things eventually come to an end, and with retirement this coming December, my stint as TechnoMinute author will also end. Chuck Madden asked me to write a short article for each of the bimonthly electronic newsletters during his term as chapter president back in 2001. I did so for Chuck and then continued for each succeeding president. I like to "sharpen the saw" and start each morning (before work) with the hope of learning something new for the day. If what I learned was interesting and related to Public Works, it made its way into an article. If I could provide one bit of advice to a young public works professional it would be to devote a little time each day in learning something new and to then use that knowledge to question the status quo.



I don't have immediate plans after retirement, although my wife Vicki and I will be rooting for the K-State rowing team. I never thought I'd have any interest in rowing, but with our daughter Molly (KSU mechanical engineering) involved, I've learned a little about the sport. It is a significant athletic endeavor that takes place in a carbon-fiber reinforced craft that costs as much as \$50,000. Molly works out every day and has several workouts, including weights, on several days each week. She stayed in Manhattan this summer to stay in rowing shape. At the races so far this year, she's rowed 16K on race day: two 4K races where you row from the dock to the start, row the race, and then row from the finish back to the dock. They say real athletes row, others just play games. K-State is in the Big 12, but the women's rowing team competes all over the country, unlike football or basketball. They need a photographer, so for at least a little while, I'll be going to racing venues across the U.S. to root for and photograph our rower.

Continued on Page 4

Techno Minute Cont.



I doubt that my KCMetro readership has as much interest in the sport as I do, so I'd appreciate a volunteer willing to write a short article every couple of months about whatever subject interests you and hopefully our readership. It's good practice for writing, it provides an excuse for searching the Internet for interesting material, and it will hone your professional skills. I've gotten a great deal of benefit from my membership in APWA, I've enjoyed writing the articles, but we need someone new.

Thank you for the many kind words over the years – it has been a pleasure to be a part of the KC Metro chapter and of the American Public Works Association. I plan on exercising my life membership status.

1K-State Novice 4 Molly second from bottom (stern) in seat 3 – at the 2K mark.

RECENT EVENTS

2015 APWA Snow & Equipment Expo

The 2015 APWA Snow & Equipment Expo was held October 5-9th in Gardner, KS.

Congratulations to the team competition winner, the **City of Topeka!**

2015 Competition Top Finishers

Weather or Not CDL Skills Competition

K.C. Bobcat Skid Steer Competition

CSTK Backhoe Competition

Key Equipment Street Sweeper Competition

Summit Truck Group Mechanic Competition

Murphy Tractor Wheel Loader Competition

Victor L Phillips Excavator Competition

American Equipment Heavy Duty Snow Plow Competition

American Equipment Severe Duty Snow Plow Competition

Director's Competition

Greg Rohe, Johnson County

Jim Fincham, City of Topeka

Andre Jones, City of Kansas City, MO

Anthony Linz, City of Overland Park

Jeff Brotherton, City of Olathe

Jim Fincham, City of Topeka

Jim Fincham, City of Topeka

Jim Fincham, City of Topeka

Devin Wilson, City of Blue Springs

Corey Hansen, City of Prairie Village



2015 APWA Congress, Phoenix, Arizona

The 2015 APWA Congress was held in Phoenix, Arizona. The KC Metro Chapter was well represented at the Awards and Recognition Ceremony. Congratulations to our National award winners!

Dennis Randolph, Director of Public Works, received the Top Ten Public Works Leader of the Year award (photo from the May issue of the *APWA Reporter*)



The KC Metro Chapter received the Presidential Award for Chapter Excellence (PACE) (photo Wayne Gudenkauf and Tim Ross receiving the award from President Usher and Dennis Randolph)



The Kansas City Water Services Department received the Sustainability Practices Award for “The Journey of Stormwater: KC to the Sea” (photo; Lara Isch with the Kansas City Water Services Department is receiving the award from President Brian Usher)



Chris Bussen, Solid Waste Superintendent with the City of Lee's Summit, received the Professional Manager of the Year Award in the Solid Waste category (photo; Chris Bussen receiving the award from President Usher)



2015 Annual KC Metro Golf Tournament—from Tawn Nugent

The 2015 KC Metro Golf Tournament was a huge success! 120 golfers enjoyed beautiful weather and top-notch golf at Prairie Highlands in Olathe, Kansas. Thank you to our tournament sponsors, players, volunteers and companies that provided donations – all critical to the event's success!

Congrats to the tournament winners:

Flight A

1st Place - Cretex

2nd Place – Olsson Associates

3rd Place - Aerotek

Flight B

1st Place – Wilson & Co.

2nd Place – GBA

3rd Place – Vance Brothers

Flight C

1st Place – Larkin Lamp Rynearson

2nd Place – Shafer Kline Warren

3rd Place – HDR

Putting Contest – Chip Touzinsky

Closest to the Pin – Heidi Thummel and Robert Radmacher

Longest Putt – Kristie Bardosi and Scott Heavin

Longest Drive – Nichol Richards and John O'Rourke



Special thank you to the Golf Committee – Jason Hanson, Matt Holmes, Therese Mersmann, Libby Rivers and Heidi Thummel!!

UPCOMING EVENTS

November Luncheon - Design-Build I-70 Bridge Project

Wednesday
November 18, 2015
11:30 AM - 1:00 PM

V's Italiano Ristorante
10819 E US Hwy 40
Independence, MO 64055

Susan Barry, P.E. is the current District Planning Manager for the Kansas City District of MoDOT and served as the Project Director for the I-70 Manchester Bridge Project. She will be speaking on the Design Build I-70 Manchester Bridge Project over Manchester Trafficway, the Blue River and the adjacent rail yard. The Luncheon is sponsored by the Diversity Committee.

AMERICAN PUBLIC WORKS ASSOCIATION (A.P.W.A.)
KANSAS CITY METROPOLITAN CHAPTER

TRANSPORTATION COUNCIL QUARTERLY MEETING

Program: Annual Orange Barrel Report

Speakers: Perry J. Allen Jr., MoDOT
Hugh Bogle, KDOT
Paul Gripka, KDOT
Burt Morey, KDOT
Various Local Agency Representatives

Date: Wednesday, November 18, 2015

Time: 4:30 p.m.

Location: Charlie Hooper's Bar & Grille (12 W. 63rd Street; Kansas City, MO)



There is no charge to attend. However, individual attendees will be responsible for their own food and beverage purchases.

Please contact Jackie White with any questions. Phone: 816.316.4857 Email: jwhite@grandview.org

Safety and Emergency Management Hosted by the APWA MoKan Committee

November 12, 2015

8:00 A.M. to 2:30 P.M.

Sylvester Powell Jr. Community Center

6200 Martway St.

Mission, Kansas 66202

Cost: \$15.00

- 7:30 – 8:00 Registration
- 8:00 – 9:00 Credentialing: Ready your Personnel and Equipment for Emergencies
- ♦ Marc Whelan, Mapping/Addressing Coordinator, Johnson County Emergency Management & Communications
 - ♦ Brenden Ourth, Sales Manager, Midwest Cards
- 9:00 – 9:15 Break
- 9:15 – 10:00 The Magic of Levitating Safety Awareness “Making Accidents Disappear”
- ♦ Dennis Burks, Safety Director, Enterprise Risk Management
- 10:00 – 12:00 Traffic Incident Management Safety
- ♦ Rusty James, Incident and Emergency Management Specialist Gannett Fleming, Inc.
- 12:00 – 12:30 Lunch (Will be provided)
- 12:30 – 2:30 Traffic Incident Management Safety (Cont.)

Register by November 9, 2015

Contact: Rob Kluender

City of Olathe

rkluender@olatheks.org

(913) 971-6012

Continued on Page 9

Bio's for MoKan Meeting Presenters

Mark Whelan: Mark has been involved in emergency services since 1980 as both a field responder and Fire & EMS dispatcher. He is currently the Addressing / GIS coordinator for Johnson County. Mark is also involved in the State of Kansas NG911 GIS subcommittee, a Member of Kansas USAR Task Force 3 as a communications and logistics specialist and member of the KC Metro Incident Management Team. Serving on various MARC committees and is heavily involved in accountability and communications on a regional level.

Brenden Ourth: Graduate of DeVry University with a background in IT. Has been with Midwest Card since 2002 and is the Accountability Solutions Sales Manager and specializes in disaster accountability and management. He has deployed to many large scale event in the Midwest for the over the past decade. Brendon also holds multiple NIMS certifications.

Dennis Burks: Dennis is the Safety Director at HNTB. He has been a safety professional for over 30 years. Dennis is a past local chapter President of the American Society of Safety Engineers (ASSE), a Certified Safety Professional (CSP), a registered Professional Engineer (PE), and the recipient of the ASSE Regional Safety Professional of the Year award. He is the author of several safety articles that have been printed in various publications. Mr. Burks is also a past President of the International Brotherhood of Magicians, Ring #129 and past winner of the Stage Magician of the Year contest.

Rusty James: Rusty retired from the Lenexa Police Department in 2006 after 30 years of service in law enforcement. The majority of his career was devoted to the area of traffic safety. Following his retirement, Rusty was the Law Enforcement Liaison for the Central Region at the National Highway Traffic Safety Administration. In that role, he worked with law enforcement agencies and the highway safety offices in Kansas, Nebraska, Iowa and Missouri. In May of 2007, Rusty began a second career as the Incident Management Coordinator for Kansas City Scout. In that capacity, he was responsible for promoting Traffic Incident Management in the Kansas City Metro area. Rusty is currently working with law enforcement agencies, fire departments, EMS personnel, the towing industry, the media and others who respond to incidents on the highways to make them aware of the need for proper traffic control, the need to clear incidents quickly, and improved worker visibility. In 2013 Rusty was selected by FHWA as a Master Trainer for the SHRP2 National Traffic Incident Management Responder Course. In that role, Rusty provides traffic incident management training to responders throughout the country. In March of 2014 Rusty accepted a position with Gannett Fleming, Inc. as an Incident and Emergency Management Specialist. In that role, Rusty will provide support to existing contract and seek out opportunities for additional consultant support for many areas of work.

SAVE THE DATE

2015 APWA HOLIDAY PARTY

December 8, 2015

5:30-9:00 PM

Grand Street Café, 4740 Grand Avenue

Kansas City, MO 64112



5:30 PM to 6:30 – Registration, Cocktails*, and Appetizers

Domestic Cheeses and Assorted Crackers

*Cash Bar

6:30 PM – Buffet Dinner

Garden Salad

Roasted Chicken Breast with Roasted Tomato Butter Sauce

Carved Prime Rib with Au Jus and Horseradish Crème Fraiche

Whipped Potatoes

French Green Beans with Roasted Shallots

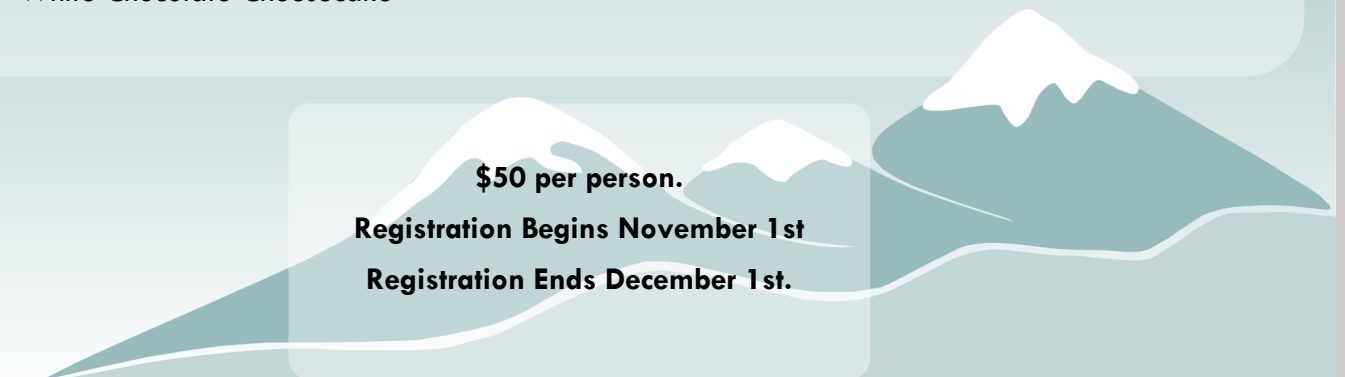
Sautéed Zucchini and Squash with Roasted Tomatoes and Fresh Basil

White Chocolate Cheesecake

\$50 per person.

Registration Begins November 1st

Registration Ends December 1st.



COMMITTEE ANNOUNCEMENTS

APWA KC Metro Chapter Fall 2015 Awards

This is a reminder that the following award applications are due
November 2, 2015.

*We all know people we work with who are deserving candidates.
Please submit their names or give them an application.*

Please submit applications via e-mail to: awardsapwa@gmail.com

Applications for the Fall 2015 Awards are available from the KC Metro Chapter Website by clicking on the following link: <http://kcmetro.apwa.net/c/awards/>.

- **Field Supervisor Excellence Award**
- **Operations Program Excellence Award**
- **Public Works Excellence Award**
- **Samuel A. Greeley Local Service Award**
- **Ken Cardwell Heart of America Award**

Field Supervisor Excellence Award *(APWA membership is not required for recognition)*

Recognizes outstanding leadership and dedication in the *operation of public works related field activities*, whereby their services and achievements have had a positive effect on the efficiency and effectiveness of governmental operations and has improved the quality of life for those who live and work within that community. The 2014 award winners were Jeff Hunt of Overland Park KS, Larry Sanchez of Olathe KS, and Shelby Williams of Kansas City, MO.

Operations Program Excellence Award *(APWA membership is not required for recognition)*

Recognizes outstanding public works *operation programs* which improve the efficiency and effectiveness of governmental operations and which improves the quality of life for those who live and work within that community. The 2014 award winners were the City of Raymore – Snow Removal Program, the City of Lenexa – Native Plant Propagation and the City of Olathe – Residential Curb Replacement.

Public Works Excellence Award *(APWA membership is not required for recognition)*

To acknowledge excellence and dedication in *public service* by recognizing the outstanding achievements of an individual public works employee. The 2014 award winners were Ron Freyermuth of Shawnee KS and Gary Steinly of Kansas City MO.

Samuel A. Greeley Local Service Award

Recognizes individuals with 30 years of continuous employment in public and/or private service and at least 15 years of continuous APWA membership.

Ken Cardwell Heart of America Award

This prestigious award recognizes individuals who have served the Chapter in an exemplary manner and through their efforts have bettered the public works community. The 2014 award winner was Steve Schmidt. Please present your nomination for this award to a KC Metro Chapter Executive Board member or the Awards Committee Chairperson by **October 2, 2015**.

*Winners of the KC Metro Chapter Fall Awards
will be recognized at the Chapter Holiday Party in December.*

Chapter Meetings Committee—from Joe Burgett

The Chapter Meetings committee is looking for hosts, presentations, and speakers for 2016. We are switching it up this year and are asking cities to host and provide a presentation on a recent project or award they've received. Think outside of the box, tours and site visits would be great! If you or someone you know has a presentation they would like to share at a monthly lunch, please contact Joe Burgett at jburgett@gbateam.com.

Sustainable Infrastructure Committee—from Anne Schroer

The APWA Center for Sustainability is pleased to introduce the first issue of "Sustainable Practices in Public Works" – now available on our website.

[Sustainable Practices in Public Works, Issue 1. August 2015](#)

This resource was developed in collaboration with APWA's Technical Committees. The Center for Sustainability is grateful to the Technical Committees who contributed to this resource by identifying sustainable practice examples within their discipline (transportation, water, fleet, leadership and management, etc.) and providing information about where and how these practices are being implemented.

The Center hopes 'Sustainable Practices in Public Works' proves a useful resource for APWA members!

<http://www.apwa.net/centerforsustainability>

Please contact your local Sustainable Infrastructure Committee chairs, Anne Schroer (aschroer@gbateam.com) or Brenda Macke (bmacke@trekkdesigngroup.com), if you have ideas or are interested in helping to spread the word about Sustainable Infrastructure in Public Works.

Kansas Roads—from Ernie Longoria, Historical Committee

With the current Federal impasse to create a long-term transportation bill, \$300M in transfers from KDOT's budget this year (\$1.3B over the past six years), and the pending budget crunch for MODOT, the Historical Committee will present a series of articles explaining historically how roads were managed.

The first article on historical road maintenance responsibilities is on early Kansas State Highways is below. Special Thanks to Norm Bowers, P.E. who originally presented the material at the 2013 Kansas Asphalt Conference.

Kansas has a lot of roads. Although ranked as the 33rd State in population and 30th in the number of registered vehicles, Kansas ranks 3rd in number of miles and 4th in number of bridges.

Road Responsibilities

Agency	Miles	Mileage	Miles Traveled
Turnpike	238	0.2%	5.2%
State	10,344	7.4%	51.2%
Counties/Townships	114,302	81.1%	15.3%
Cities	15,868	11.3%	28.3%

was little need for much maintenance of dirt roads. By 1910, nearly every mile of Kansas was considered an open Road.

The primary reasons for this was because of the original size of homesteads, favorable legislation, and favorable terrain. Homesteading began around 1855 and with original lots being at least 160 acres, road were necessary to help the Kansas rural residents get produce to market. Additionally, as Counties were formed, the State Legislature declared all County Sections Lines as opened Public Roads. With the typical form of transit being horse drawn wagons, there

Pre territorial-trails

19 TH CENTURY KANSAS TRAILS



Indian trails, Santa Fe Trail, Oregon Trail, etc.

While Kansas had a large number of open, public roads, the original State Constitution prohibited the state from building roads or other internal improvements. Roads and other public infrastructure improvements were considered a local matter as the constitution said that, “the state shall never be a party to carrying on any works of internal improvement.”

From Territorial time through early Statehood, Roads remained a local matter. Roads were what got you to town and then you took the train. Townships and local landowners built and maintained the roads while Counties built bridges. Townships were divided into districts and a road overseer maintained the roads. Adjacent landowners could pay a poll tax to the

road overseer or they could work off their taxes by working on the road.

Road construction at the time was done with a road drag. A heavy wooden ladder-like device was drug behind a team of horses to smooth out the dirt road. When a number of landowners worked on road, the event was called a Road Bee (similar to a Sewing Bee).

Road Drag to 1910



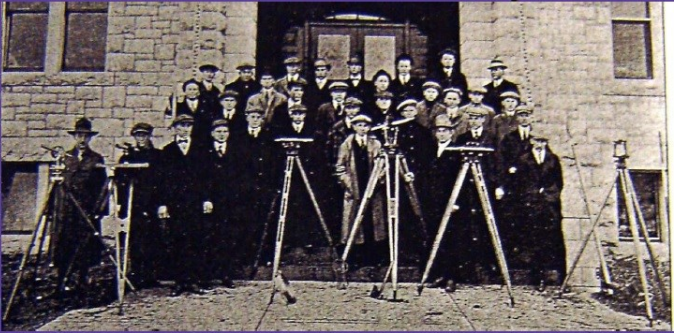
Beloit 1912 Road Bee



Things finally began to change with the new mass production and affordability of the automobile. In 1909, the State Legislature allowed Counties to designate County Roads and maintain them. After little movement by the Counties, in 1911 the Legislature required Counties to classify roads as State Roads, County Roads, Mail Routes, or Township Roads. All State and County Roads would be maintained by the County. Counties and Townships were authorized mill levies for road maintenance and required to do road dragging twice a year. Counties were also required to hire a County Engineer.

Kansas Roads, cont.—from Ernie Longoria, Historical Committee

History of Civil Engineering at Kansas State University



The Board of Regents authorized the creation of the Department of Civil and Highway Engineering in 1907. The first classes began in Fall 1908.

ed. note - For the record, KU's School of Engineering officially began in 1891

1918 saw the first designated State Highway system. 6,000 miles in total, the roads used road names and not the number system we use today. In Kansas, there were 3,270 miles of federal aid routes. 1919 saw the first large scale application of gravel on County Roads. Although progress was being made, Counties alone decided road improvements. A 2-cent (equivalent to 28-cents today) gas tax was started in 1923 and in 1925, the State and Federal Highway as we know it today started.

Crawler pulling grader 1920-1940



Marion County Lehigh Township 1934 (operator Harry Weyand)

Motor Vehicle and Motor Fuel Tax Amendment allowed all taxes generated by those fees to go directly to the State as opposed to the Counties.

From that point to today, Kansas motorists have steadily enjoyed all weather roads of increasing speed and quality. Counties and Townships still have local control for maintenance and improvements for local roads, but it's just as critical to have State and Federal involvement to facilitate ease of travel across different regions of the State and across the Nation.

In spite of the new requirements and surge of automobile ownership, in 1915, County Commissioners opposed a State Highway Commission and refused to improve roads beyond dirt surfaces. 90% of all roads were still dirt by 1917.

The Federal Government became involved when the Federal Aid Road Act of 1916 authorized \$75 Million Dollars (\$1.6B in today's dollars) over 5 years to be spent on Postal Routes. In order to receive that money, each State was required to have a State Highway Department to disburse the funds. In 1917, the Legislature created the Kansas State Highway Commission (precursor for KDOT). The Commission funnelled federal funds to Counties and Counties had to pay a 50% funding match. The Legislature also passed laws for a 40mph speed limit, no one under 14 could drive, all cars had to have two headlights, one taillight and a horn, bell, or whistle.

1919 Counties Gravel Roads Benefit Districts



With all the changes, the Public was still not satisfied with County maintenance of roads. In 1928, the Highway Amendment to the State Constitution allowed internal improvements for highways. A

Cat & Scraper 1930's to 1970's



APWA KC Metro Chapter



TOYS FOR TOTS TOY DRIVE AT THE HOLIDAY PARTY

Location: GRAND STREET CAFE

On the Country Club Plaza

4740 GRAND AVE

KANSAS CITY, MO 64112

Time: 5:30 PM, DECEMBER 8, 2015



DONATE A NEW UNWRAPPED TOY FOR KIDS 0-16 YEARS

Courtesy of the Community Service Committee

NOMINATING COMMITTEE LETTER

Nominating Committee - from Wayne Gudenkauf

Kansas City Metro Chapter Members

The 2015 KC Metro Chapter Nominating Committee, consisting of Past Presidents Dena Mezger, Bob Miller, and Wayne Gudenkauf, in accordance with the Chapter By-Laws has nominated the following individuals to serve as officers and directors on the Chapter Executive Committee for the 2016 administrative year:

President	Bill Stogsdill	City of Fairway
Vice President	Rob Krewson	HDR
Secretary	Jason Meyers	Burns & McDonnell
Treasurer	Dan Brown	Walter P. Moore
Director (2nd year)	Shawn Graff	City of Lee's Summit
Director (2nd year)	Cory Clark	George Butler Associates
Director (1st year)	Kyle Dieckmann	City of Overland Park
Director (1st year)	Tim Morgan	HNTB

Other ex officio and appointed members of the Executive Committee include:

Past President	Tim Ross	George Butler Associates
Director at Large	Rob Kluender	City of Olathe
Delegate	Joe Johnson	City of Leawood

The 2015 Executive Committee has directed the election of these officers and directors take place at the Annual Holiday Party on December 8, 2015.

This announcement serves as the official notice to Chapter Membership of the nomination of this slate of officers and directors for the 2016 Executive Committee and of the intent to hold elections. A copy of the By-Laws Article XIII – Election of Officers, is included for reference. This article outlines the election process, including the process by which Chapter members may nominate other candidates for the Executive Committee.

Respectfully submitted,

Wayne A. Gudenkauf, Past President
Chair, Nominating Committee

Continued on Page 17

NEW MEMBERS

Christy A. Cain, Renaissance Infrastructure Consulting (RIC)

Heath Chapman, Mobile Hydraulic Equipment Co

Spread the word about your good works!

Has your organization volunteered time or provided resources to help out others? If you'd like to highlight your outreach event, send information to the Pub News editor, Caitlin Gard, via e-mail: cgard@cityofshawnee.org. Photos are encouraged.

NOMINATING COMMITTEE LETTER

Nominating Committee Cont.

ARTICLE XIII - ELECTION OF OFFICERS

SECTION 1. The President shall appoint a Nominating Committee of the three most recent past presidents having current membership in the Chapter. The most recent Past President who is available shall serve as Chair of the Nominating Committee. If a past President is unable to serve as Chair or member of the Nominating Committee, then the President should appoint a past member of the Executive Committee as Chair or member of the Nominating Committee. The Nominating Committee shall report the names of its nominees for each office standing election to the Executive Committee by October 1. The names of the nominees shall be made available to all voting members a minimum of 15 days prior to the election or distribution of ballots in order for self nominations to be declared. One or more nominations shall be made by the Nominating Committee for each office. No persons serving on the Nominating Committee shall be eligible for nomination except by written declaration presented to the Nominating Committee.

SECTION 2. The Executive Committee shall prescribe the form of ballot, schedule and other details of the election procedure. The annual election shall be held at a time and place determined by the Executive Committee. Additional nominations for any office shall be made in writing, officially signed by not less than five Chapter members and shall be filed with the Secretary not less than one week prior to the annual meeting.

SECTION 3. Newly elected Officers and Directors shall assume office at the beginning of the administrative year with the Vice President elected the previous year becoming President.

SECTION 4. In the event of extraordinary and extenuating circumstances, the Executive Committee shall have the power to declare the term of office of any or all Chapter Officers and Directors extended for one full term.

OTHER ANNOUNCEMENTS



With more than 100 years of annual meetings to its credit, the American Public Works Association has hosted its last “Congress & Exposition.” Now the association’s annual meeting will be known as PWX, APWA officials announced at Congress in Phoenix. Recognizing monumental changes in the makeup of the workforce in the last decade, APWA is launching PWX, the new brand name for the APWA International Public Works Congress and Exposition.

“PWX won’t be just a new package for an old program, there will be significant changes from the Congress we have known,” said APWA’s Interim Executive Director Larry Frevert. “PWX will incorporate more technology, will embrace and engage the younger generations in the profession, will cater to all of the learning styles of the five generations, and will be a setting that will encourage cross-generational dialogue, so everyone can learn and benefit. This is an exciting time of change and PWX is a symbol of our recognition of these changes.”

Proposed KC Metro Chapter By Laws

The following bylaws will be voted on at this year's Holiday Party.

AMERICAN PUBLIC WORKS ASSOCIATION KANSAS CITY METROPOLITAN CHAPTER BY LAWS

December 8, 2015

ARTICLE I – NAME AND JURISDICTION

SECTION 1. The name of the organization shall be the American Public Works Association, hereinafter called APWA, Kansas City Metropolitan Chapter, hereinafter called the Chapter. The territory included within the jurisdiction of this Chapter shall be: the Counties of Platte, Clay, Jackson and Cass in the State of Missouri, and the Counties of Johnson, Leavenworth and Wyandotte in the State of Kansas.

ARTICLE II – MISSION AND PURPOSE

SECTION 1. The purpose of this Chapter is to cause and share with our community, the advancement of the theory and practice of the design, construction, maintenance, administration and operation of public works facilities and services; the dissemination of information and experiences; the promotion and standardization of improved practices in public works administration; the expectation that all member public works officials will adhere to high professional and ethical standards; the professional and social improvement of its members and the promotion of cooperation among all public, quasi-public, and private persons, firms, corporations, bodies, utilities and agencies which have interests in the field of public works, as set forth in the "Rules Governing Chapters of the American Public Works Association."

SECTION 2. The Chapter shall engage in a program of activities designed to further the purposes of APWA within its jurisdiction including, but not limited to, the scheduling of regular meetings of its membership. Such programs and activities shall be consistent with the mission, vision, and adopted goals of APWA and shall not include the endorsement of items of a partisan, political, or business nature inconsistent with the mission, vision, and adopted goals of APWA.

SECTION 3. The Chapter is not organized for profit, and earnings shall not directly benefit any Chapter member or Officer except as compensation for services rendered or for reimbursement of necessary expenses actually incurred.

SECTION 4. In the event of a dissolution or liquidation of the Chapter, any assets then remaining shall be rendered to the American Public Works Association, provided that the Myron D. Calkins Scholarship Endowment Fund shall be transferred to the Engineers Club of Kansas City Student Assistance Fund to be targeted to engineering students interested in public works' operations and administration.

ARTICLE III – MEMBERSHIP

SECTION 1. Members of APWA residing in the Kansas City Metropolitan Chapter territory specified in Article I, Section 1, shall be members of the Chapter and shall hold the same type of membership in the Chapter that they hold in APWA. Members of APWA residing outside the Kansas City Metropolitan Chapter territory specified in Article I, Section 1, may elect to be members of the Kansas City Metropolitan Chapter and shall hold the same type of membership in this Chapter that they hold in APWA but shall be a member of only one Chapter. Members of APWA residing in the Kansas City Metropolitan Chapter territory as described in Article I, Section 1, may elect to be a member of a Chapter other than the Kansas City Metropolitan Chapter but shall be a member of only one Chapter.

SECTION 2. Criteria for and grades of membership shall be as prescribed by the By Laws of the American Public Works Association.

Continued on Page 19

Proposed KC Metro Chapter By Laws Cont.

ARTICLE IV – FISCAL AND ADMINISTRATIVE YEARS

SECTION 1. The fiscal year of the Chapter shall be from July 1 through June 30.

SECTION 2. The administrative year of the Chapter shall be from January 1 to December 31.

ARTICLE V – EXECUTIVE COMMITTEE

SECTION 1. The governing body of the Chapter shall be the Executive Committee, consisting of:

The Officers of the Chapter.

The four elected Chapter Directors.

The Chapter Delegate.

The Chapter Alternate Delegate, if appointed.

The current Chair of the MO-KAN Street Superintendents Association, who shall be a director at large and a member of the Chapter.

SECTION 2. No person shall be nominated, elected, or allowed to serve on the Executive Committee unless he or she holds current membership in APWA.

SECTION 3. In the event of a vacancy on the Executive Committee the remaining members of the Executive Committee shall have the power to appoint a Chapter member to fill the unexpired term of office.

SECTION 4. The Executive Committee shall manage all the affairs of the Chapter in accordance with the rules and regulations of APWA and the “Rules Governing Chapters of the American Public Works Association.”

SECTION 5. The Executive Committee shall have the power to contract with an individual or firm to provide administrative or other services and whose duties and compensation shall be as specified by the Executive Committee in an approved and executed contract that shall have been previously approved by APWA.

SECTION 6. Provided a quorum as defined in Article X is present, an affirmative vote of a simple majority of the Executive Committee members present at any regular or duly called meeting shall be required to pass any motion consistent with this or any other provision of the Chapter By Laws unless otherwise provided in these By Laws.

SECTION 7. Should a motion that has been previously debated at a meeting of the Executive Committee where no action was taken or a motion that has not been previously debated arise requiring immediate action, the President can put the motion to a vote by means of electronic balloting as addressed in the Rules Governing Chapters of the American Public Works Association.

SECTION 8. The Secretary shall record, as a part of the minutes of the Executive Committee Meeting immediately following the voting, the means and results of the voting and the names of all Executive Committee members participating.

SECTION 9. The Executive Committee shall maintain a Chapter Leadership Manual as guidance to the officers and committee chairs in managing the affairs of the Chapter. At least once each three years the President shall appoint a special committee to review the Manual and make recommendations to the Executive Committee for revisions.

Proposed KC Metro Chapter By Laws Cont.

ARTICLE VI – OFFICERS AND DIRECTORS

SECTION 1. The Chapter shall have as its Officers, a President, a Vice President, a Secretary, a Treasurer, and the Immediate Past President. The Chapter shall have four Chapter Directors and a Director at Large.

SECTION 2. The President shall be the Chief Elected Officer of the Chapter and shall serve a term of one year. He/she shall preside at all Chapter and Executive Committee meetings and shall chair the Executive Committee. He/she shall issue the call for regular or special Executive Committee meetings. The President or Treasurer shall have the authority to sign contracts on behalf of the Chapter at the direction of the Executive Committee. The President shall appoint the Chairs of all Committees, standing and special, and be an ex-officio member of each Committee. He/she shall see that these Committees function and shall cooperate with the Committee Chairs to that end. He/she shall perform such other duties as may from time to time be assigned to him/her by the Executive Committee. In addition, he or she will function as a board liaison for committees.

SECTION 3. The Vice President shall be elected annually to serve a term of one year and shall assume the office of President upon the completion of the term of office of Vice President. The Vice President shall perform such other duties as assigned by the President or the Executive Committee and shall act for the President in the President's absence or when the President is unable to perform the duties of the office, as determined by the Executive Committee. In addition, he/she will function as a board liaison for committees, schedule and conduct the annual Planning Retreat, plan the Chapter Dinner at the annual Congress and Equipment Show, and order the pin and plaque for the outgoing President.

SECTION 4. The Secretary shall be elected annually to serve a term of one year and shall keep all records (except for financial records kept by the Treasurer) and correspondence of the Chapter. The Secretary shall prepare a written record of the proceedings of the Executive Committee and any formal proceedings of the Chapter. The Secretary shall prepare and submit to APWA such reports as may be required. At the expiration of the term of office, the Secretary shall turn over to their successor, all books, records, papers, executed contracts, documents, or other property of the Chapter in their custody. In addition, he/she will function as a Board Liaison for Committees.

SECTION 5. The Treasurer shall be elected on even numbered years to serve a term of two years and shall have custody of the funds, securities, and other valuable effects in the name of and to the credit of the Chapter. The Treasurer shall receive all monies due the Chapter, depositing them in a bank or in other safe and secure investments approved by the Executive Committee, all of which shall be in the name of the Chapter. All checks and vouchers must be signed by the Treasurer. The Treasurer shall prepare and submit financial reports monthly to the Executive Committee and shall prepare necessary documents to be reviewed by the Chapter Audit Committee. The Treasurer shall prepare and submit to APWA such reports as may be required. At the expiration of the Treasurer's term of office, the Treasurer shall turn over to their successor all books, papers, money, securities, and other valuable effects belonging to the Chapter, taking a receipt therefore from the successor. In addition, he or she will function as a Board Liaison for Committees.

SECTION 6.

The Chapter's representative to the APWA Council of Chapters, hereinafter called the Chapter Delegate, shall be appointed by the Executive Committee to serve a three year term and shall represent the Chapter to that body, attending regional and annual meetings of the Council of Chapters, bringing Chapter concerns to their attention, and informing the Chapter of Council of Chapters' activities. The Chapter Delegate shall prepare and submit to APWA such reports as may be required. An Alternate Chapter Delegate may be appointed annually by the Executive Committee to serve for the current administrative year and shall act for and on behalf of the Chapter Delegate in the event of the Chapter Delegate's absence or inability to perform the duties of this position as determined by the Executive Committee.

SECTION 7. Four members of the Chapter shall be elected to serve as Chapter Directors and shall be members of the Executive Committee to provide direction to the Chapter. Each Director shall serve a two year term and two shall be elected each year so as to provide for continuity of direction. Each Director shall attend all Chapter and Executive Committee meetings and shall be prepared to present progress reports of any assignments. Should any Director be elected to another position or otherwise vacate the position of Director prior to the expiration of his/her term, the Executive Committee shall appoint a member to serve for the remainder of the elected term. In addition, he/she will function as a board liaison for committees.

Proposed KC Metro Chapter By Laws Cont.

SECTION 8. The most recent Past President holding current membership in the Chapter shall be an ex officio member of the Executive Committee with voting privileges and shall serve in an advisory capacity to the President and the Executive Committee. It shall be the duty of the Past President to Chair the Nominating Committee, Chair the Past Presidents Advisory Committee and serve on other special committees as may from time to time be assigned to him/her by the Executive Committee. In addition, he/she will function as a board liaison for committees.

SECTION 9. All Chapter Officers, except as otherwise provided, shall serve for one year or until their successors are elected and installed. The terms of office shall begin as specified in Article XIII, Section 3, of these By Laws.

SECTION 10. The elected Chair of the MO-Kan Street Superintendent's Association shall be a Director at Large of the Executive Committee with voting privileges and a member of the Chapter. In addition, he/she will function as a board liaison for committees.

SECTION 11. In case of the inability or neglect in performance of duty by any Officer or Director of the Chapter as determined by the Executive Committee, the Executive Committee shall have the power by a two-thirds vote of its members to declare the office vacant and shall fill the vacancy as provided in Article V, Section 3.

ARTICLE VII – COMMITTEES

SECTION 1. The President will annually designate at a minimum two Standing Committees, the Chapter Audit Committee and the Nominating Committee. These committees are described in Articles VIII and XIII. The President, at their discretion, may designate additional standing committees, special committees and task forces as deemed necessary to conduct Chapter business.

SECTION 2. The chair of each standing committee and special committee shall be appointed annually by the President with the exception of the Chair of the MO-KAN Street Superintendents Association. Each appointed chair shall be a member of the KANSAS CITY Metropolitan Chapter. Additional committee members are recommended and may be appointed at the discretion of the committee chair.

SECTION 3. Each standing committee shall report to the Executive Committee its activities at least once annually or more frequently if directed by the President or the Executive Committee.

SECTION 4. No committee shall obligate the Chapter or issue a public proclamation or policy news release without specific authorization from the Executive Committee.

SECTION 5. Committees exist for the purpose of implementing the mission, vision, and goals of the Chapter and APWA. Only members of APWA and the Chapter are eligible to serve as chair of a committee. While it is expected those serving on such committees will be members of the Chapter, the inclusion of non-members in some circumstances where specialized technical expertise is needed may be appropriate. However, the effective control of the committee shall be retained by the committee chair.

ARTICLE VIII – CHAPTER AUDIT COMMITTEE

SECTION 1. The President shall annually appoint an Audit Committee consisting of at least three Chapter members who shall examine the financial records of the Chapter. The Treasurer shall not be a member of the Audit Committee but shall cooperate fully with the Audit Committee.

SECTION 2. The duties of the Audit Committee shall be to examine the Chapter's financial records in order to meet the requirements of APWA. The duties of the Audit Committee shall include, but not be limited to, the following: examination of cancelled checks, accounting for numerical sequencing, examining endorsements, reviewing bank statements, and the reconciliation of documents supporting disbursements. The Chapter Audit Committee shall conduct the annual examination of the Fiscal Year financial documents using a computer package or hard copy format provided by APWA. Chapters must adhere to the policies outlined in the Rules Governing Chapters of the American Public Works Association as to deadline dates for submitting Audit Committee findings.

Proposed KC Metro Chapter By Laws Cont.

ARTICLE IX – MEETINGS

SECTION 1. The Annual Meeting of the Chapter, for the purpose of electing and/or installing the newly elected Officers and Directors, shall be held in December of each year, the date and place of which shall be determined by the Executive Committee. Other General Membership Meetings for the transaction of business of the Chapter may be called by the President upon the President's own volition, upon request by the Executive Committee, or upon the written request of 15 members in good standing of the Chapter. The membership shall be notified at least 30 days in advance of the date and place of the annual meeting and of any other general membership meetings.

SECTION 2. The Executive Committee shall meet at least twelve times during the administrative year. Special meetings of the Executive Committee shall be held at the call of the President or at the written request of a majority of the members of the Executive Committee.

SECTION 3. Meetings of the Executive Committee may be conducted in person, by means of a telephone or video conference call, or in any combination thereof provided such meetings are in accordance with all other provisions of these By Laws.

SECTION 4. The President shall formally notify each member of the Executive Committee at least two weeks prior to the scheduled date of a regular meeting of the Executive Committee. An agenda and copy of each report and/or resolution, or other actions to be considered at such meeting, shall accompany the notice of the meeting and no changes to the agenda shall be considered at such meeting without the consent of the majority of the members of the Executive Committee in attendance.

SECTION 5. The President shall formally notify each member of the Executive Committee at least five days prior to the scheduled date of a special meeting of the Executive Committee. An agenda and copy of each report and/or resolution, or other action to be considered at such meeting, shall accompany the notice of the meeting and no other matters shall be considered at such meeting.

ARTICLE X – QUORUM

SECTION 1. A simple majority (seven members) of the voting members of the Executive Board shall constitute a quorum at all Executive Committee meetings. The President may from time to time elect to conduct business by mail or electronic mail between regularly scheduled meetings of the Executive Committee in which case a quorum shall consist of a simple majority of the voting members of the Executive Committee. Any business conducted by mail or electronic mail that does not unanimously carry or fail will then be conducted with the Executive Committee via conference call.

SECTION 2. For general membership meetings of the Chapter involving a formal business agenda, five percent of the membership, of whom no more than one-half shall be members of the Executive Committee, shall constitute a quorum for the transaction of business.

ARTICLE XI – DUES

SECTION 1. The Executive Committee may establish Chapter dues for its members in accordance with the "Rules Governing Chapters of the American Public Works Association."

SECTION 2. All dues are payable to APWA annually in advance. Non-payment of dues for a period of 90 days shall be treated as equivalent to resignation. Such members shall not again be eligible for membership until all arrears have been paid in full.

ARTICLE XII – BRANCHES

SECTION 1. Branches of the Kansas City Metropolitan Chapter may be formed in accordance with the procedures set forth in the "Rules Governing Chapters of the American Public Works Association," by groups of members representing a region within the territorial limits of the Kansas City Metropolitan Chapter for the purpose of furthering the mission, vision, goals, and objectives of the Kansas City Metropolitan Chapter.

Proposed KC Metro Chapter By Laws Cont.

SECTION 2. Any group of 10 or more members of the Chapter may petition the Executive Committee to form a branch within the Chapter. The Executive Committee may authorize upon approval by the APWA Board of Directors the establishment of such branches by adopting a resolution which provides for its name, jurisdiction, approval of Branch By Laws, method of conducting affairs, submission of periodic reports and the appointment of a temporary committee to arrange for an organizational meeting of the branch.

SECTION 3. The officers and all members of the branch shall be current members of APWA.

ARTICLE XIII – ELECTION OF OFFICERS

SECTION 1. The President shall appoint a Nominating Committee of the three most recent past presidents having current membership in the Chapter. The most recent Past President who is available shall serve as Chair of the Nominating Committee. If a past President is unable to serve as Chair or member of the Nominating Committee, then the President should appoint a past member of the Executive Committee as Chair or member of the Nominating Committee. The Nominating Committee shall report the names of its nominees for each office standing election to the Executive Committee by November 1. The names of the nominees shall be made available to all voting members a minimum of 15 days prior to the election or distribution of ballots in order for self nominations to be declared. One or more nominations shall be made by the Nominating Committee for each office. No persons serving on the Nominating Committee shall be eligible for nomination except by written declaration presented to the Nominating Committee.

SECTION 2. The Executive Committee shall prescribe the form of ballot, schedule and other details of the election procedure. The annual election shall be held at a time and place determined by the Executive Committee. Additional nominations for any office shall be made in writing, officially signed by not less than five Chapter members and shall be filed with the Secretary not less than one week prior to the annual meeting.

SECTION 3. Newly elected Officers and Directors shall assume office at the beginning of the administrative year with the Vice President elected the previous year becoming President.

SECTION 4. In the event of extraordinary and extenuating circumstances, the Executive Committee shall have the power to declare the term of office of any or all Chapter Officers and Directors extended for one full term.

ARTICLE XIV – DISSOLUTION OF THE CHAPTER

SECTION 1. When necessary and when directed by the APWA Board of Directors, the Chapter may be dissolved. In the event of the dissolution or final liquidation of the Chapter, after all liabilities and obligations have been paid, satisfied and discharged, or adequate provision made therefore, all remaining property and assets of the Chapter shall be conveyed, assigned and transferred to APWA to administer according to the By Laws of APWA, with the following exception: The Myron D. Calkins Scholarship Endowment Fund, which is a scholarship fund as defined by the IRS in Code Section 501 (c) (3), shall be moved to another 501 (c) (3) scholarship fund as indicated in Article II Section 4 of these By Laws.

ARTICLE XV – PARLIAMENTARY AUTHORITY

SECTION 1. The order of business at meetings of the Executive Committee or of the Chapter membership shall be determined by the President.

SECTION 2. The rules contained in the current edition of Robert's Rules of Order, Newly Revised, shall govern matters of parliamentary procedure of the Chapter, except as otherwise provided in these By Laws.

ARTICLE XVI – AMENDMENTS

SECTION 1. Amendments to these By Laws may be proposed by initiatory petition submitted to the Executive Committee in writing and signed by not less than 15 Chapter members or by resolution of the Executive Committee. Proposed amendments submitted to the Executive Committee by petition shall be acted upon by the Executive Committee within six months of receipt. Proposed amendments, if approved by the Executive Committee, shall be presented by the Executive Committee to APWA National.

Continued on Page 24

Proposed KC Metro Chapter By Laws Cont.

SECTION 2. Proposed amendments submitted to the Executive Committee and not approved by the Executive Committee shall be returned within 60 days by the Executive Committee to the petitioners with a letter of explanation requesting that the proposed amendments be modified and resubmitted to the Executive Committee. If the proposed amendment is resubmitted in writing and signed by a simple majority of the original petitioners, the Executive Committee shall immediately present the proposed amendment to APWA for approval with or without approval of the Executive Committee.

SECTION 3. Upon approval of the proposed amendments by APWA, the Executive Committee shall, within one year of the approval of the proposed amendments by APWA, present the proposed amendments to the Chapter membership for approval at a meeting or by letter/electronic ballot as may be determined by the Executive Committee provided that the membership has been given a minimum of three weeks to submit ballots. An affirmative vote of two-thirds of the qualified votes cast shall be necessary for the adoption of a proposed amendment.

SECTION 4. These By Laws and such amendments as may be made from time to time shall become effective upon approval by APWA and adoption by the Chapter in the manner prescribed in this article.

SECTION 5. The Executive Committee should conduct a review of the Chapter's By Laws for completeness and applicability at least once every three years. Furthermore the Chapter should report in writing to APWA compliance with the approved By Laws or submit proposed By Law changes for APWA approval and adoption by the Chapter.

CERTIFICATION OF BY LAWS

These By Laws were amended by members of the Kansas City Metropolitan Chapter at a duly called meeting on December 8, 2015 with a quorum present as prescribed by Chapter By Laws.

The minutes of this meeting are on file with the Chapter Secretary and APWA.

Tim Ross
President

Date

Jason Meyers
Secretary

Date

CHAPTER LEADERSHIP

KC APWA 2015 OFFICERS

President - Tim Ross
Vice President - Bill Stogsdill
Secretary - Jason Meyers
Treasurer - Rob Krewson
Past President - Wayne Gudenkauf
Director (2nd Year) - Dan Brown
Director (2nd Year) - Shannon Jeffries
Director (1st Year) - Therese Mersmann
Director (1st Year) - Cory Clark
Director-At-Large - Robert Kluender
Delegate - Joe Johnson

APWA 2015 COMMITTEE CHAIRS

Audit & Budget - Alysen Abel
Awards - Tony Meyers and Melissa Prenger
By-Laws - Wayne Gudenkauf
Chapter Meetings - Joe Burgett
Communications and Publicity - Tim Morgan
Community Service - Shawn Graff
Diversity - Abdul Yahaya
Education & Training - Todd Thalmann
Emergency Management & Homeland Security (PET) -
Scott Ward
Emerging Leaders - Rob Kline
Engineering & Technology - Michael Haake
Facilities & Grounds - Tom Audley
Fleet Services - Howard Mann
Golf Tournament - Tawn Nugent
Governmental Affairs - Travis Levitt and Joab Ortiz
Historical - Ernie Longoria
Holiday Party - Julie McNiff
K-12 Student Outreach - David Smalling
Leadership & Management - Eric Strack
Membership - Matt Spencer
Membership BBQ & Steak Fry - Brian Ladd
Mo-Kan Public Works Association - Robert Kluender
Myron D. Calkins Scholarship - Shannon Jeffries and Phil
Herrman
Myron Calkins Scholarship - Wayne Gudenkauf
National Public Works Week - Dan Brown
Nominating Committee - Wayne Gudenkauf
Past President Committee - Wayne Gudenkauf
Snow & Equipment Training Expo - Chuck Walston and Chad
Courtois
Standards & Specifications - Dena Mezger
Student Chapter - Aaron Castro
Sustainable Infrastructure - Ann Schroer and Brenda Macke
Transportation - Jim Wingert
Utility & Public Right-of-Way - John Cooper
Water Resources Management - Chad Johnson

Appointments, Liaisons, and Coordinators
ACEC-APWA Liaison - John Skubal
Calendar/Events Coordinator - Karen Scherer
Joint Engineers Council - Alysen Abel
MCIB/KCMMB - Todd LaTorella
Solid Waste Management - Lisa McDaniel

The APWA Pub News, a free publication of the Kansas City Metro Chapter of the American Public Works Association (APWA), is published in six issues throughout the year. To receive a free subscription, send an e-mail to cmorgan@hntb.com with "Beam Me Up!" in the subject line.

Publisher: Kansas City Metro Chapter of APWA
Editor: Caitlin Gard
Staff: Tim Morgan

INTERESTED IN WRITING FOR THE APWA PUB NEWS?

The Pub News staff welcomes announcements, news articles, photos and suggestions. A new issue will be published in May. The deadline for the next issue will be Friday, December 25, 2015. Deadlines will be strictly enforced. Electronic formats are preferred, but not required. Send your stories to Caitlin Gard at cgard@cityofshawnee.org

POLICY FOR THE USE OF THE APWA PUB NEWS, WEBSITE AND ELECTRONIC MAILING LIST

It shall be the policy of the KC Metro Chapter that the use of the "APWA Pub News, Website and Electronic Mailing List" by outside agencies shall abide by the following:

- Outside agencies, educational institutions, and not-for-profit organizations may utilize the Chapter's website for dissemination of approved items that are considered beneficial to our membership.
- Approval of these items may be granted by the Chapter President, the Newsletter Editor and the Website Committee. When requested, announcements from other organizations may be posted on the Chapter's website under "News" if the Newsletter/Communications Committee is provided electronic announcements in a format that can be posted without modification or editing.
- The Newsletter/Communications Committee may use the chapter's electronic mailing list for announcements to KC Metro Chapter members when the topic is related to an APWA activity or event. However, an announcement will not be sent before the Chapter event has been posted on the KC Metro Chapter website.

This policy was approved by the Executive Committee on November 19, 2008.

For contact information, visit: <http://kcapwa.net>